

PROGRAMME OF MEASURES
DISCHARGES FROM URBAN WASTE WATER TREATMENT PLANTS
BACKGROUND DOCUMENT

**Mott MacDonald Ireland
Consulting Engineers
5 Eastgate Avenue
Eastgate
Little Island
Co. Cork.**

Job Nr. : PA8906

January 2010

Revision Control Table

The User is Responsible for Checking the Revision Status of this Document

		For & on Behalf of Mott MacDonald Ireland Ltd.			
Rev. Nr.	Description of Changes	Prepared By	Checked by	Approved by	Date
A	Initial Issue	F. McGivern	DC/RMcE	FMcG	January 2010

"This document has been prepared for the titled project or named part thereof and should not be relied upon or used for any other project without an independent check being carried out as to its suitability and prior written authority of [Mott MacDonald] being obtained. Mott MacDonald Ireland accepts no responsibility or liability for the consequences of this document being used for a purpose other than the purposes for which it as commissioned. Any person using or relying on the document for such other purpose agrees, and will by such use or reliance be taken to confirm his agreement, to indemnify Mott MacDonald Ireland for all loss or damage resulting therefrom. Mott MacDonald Ireland accepts no responsibility or liability for this document to any party other than the person by whom it was commissioned.

To the extent that this report is based on information supplied by other parties, Mott MacDonald Ireland accepts no liability for any loss or damage suffered by the client, whether contractual or tortious, stemming from any conclusions based on data supplied by parties other than Mott MacDonald Ireland and used by Mott MacDonald Ireland in preparing this report."

TABLE OF CONTENTS

1.0	INTRODUCTION	1
	1.1 Purpose.....	1
	1.2 Classification of Surface & Groundwaters.....	1
	1.3 Impacts from Discharges from Urban Waste Water Treatment Plants.	2
2.0	EXISTING LEGISLATION	3
	2.1 Urban Waste Water Treatment Regulations (S.I. 254 of 2001).....	3
	2.2 European Communities (Quality of Shellfish Waters) Regulations (S.I.268 of 2006).....	4
	2.3 Waste Water Discharge (Authorisation) Regulations S.I. No. 684 of 2007)	4
3.0	IDENTIFICATION AND PRIORITISATION OF MEASURES FOR WASTE WATER TREATMENT PLANTS	5
	3.1 Sources of Information	5
	3.2 Identification of Measures.....	5
4.0	PROGRAMME OF MEASURES AND DATES FOR COMPLETION.....	11
	4.1 Tables of Measures.....	11
	4.2 Dates for Completion.....	11

Appendix A	Table 1	Plant Requiring Capital Works.
Appendix B	Table 2	Agglomerations Requiring Further Investigations Prior To Capital Works.
Appendix C	Table 3	Plants Required To Commence Implementation Of Pollution Reduction Programmes For Shellfish Waters.
Appendix D	Table 4	Plants Requiring Implementation Of An Appropriate Performance Management System.
Appendix E	Table 5	Plants Requiring The Investigation Of CSOS.
Appendix F	Table 6	Plants Required To Ensure The Capacity Of The Plant Is Not Exceeded.

1.0 INTRODUCTION

1.1 Purpose

Pollution of surface waters and ground waters results from human activities associated with our everyday sanitation needs and work related activities. Polluting matter generated by these activities can enter the environment by way of a direct discharge through a pipe (point source discharge) or by runoff or percolation through the ground (diffuse source discharge).

The Water Framework Directive sets objectives concerning the reduction of polluting matter entering waters, prevention of the deterioration in water quality and the achievement of Good Status in all waters. The Directive requires that measures are put in place to achieve these objectives.

Local Authorities have responsibility for the collection and treatment of urban waste water. Discharges of urban waste water are known to impact on the quality of the receiving waters. Regulations are in place concerning the control of discharges from urban agglomerations. Compliance with existing regulations will contribute significantly to the achievement of the objectives of the Water Framework Directive. However, there are circumstances where compliance with existing regulations may not be sufficient. In such cases additional measures may be required.

The purpose of this document is to explain the methodology used to identify measures to be implemented concerning discharges from urban waste water treatment plants.

1.2 Classification of Surface & Groundwaters

The Environmental Protection Agency has classified the overall ecological status of surface water bodies. The ecological status considers the biological status and the chemical status. The classification system includes five designations:-

- High status
- Good status
- Moderate status
- Poor status
- Bad status

Nationally 46 % of all river water bodies and 37% of transitional and costal water bodies have been classified as less than Good status. The Water Framework Directive requires that measures are put in place to restore all water bodies to Good Status. In addition, measures must be put in place to ensure that there will be no deterioration in status. Therefore, measures will be required to protect existing High and Good Status waters from deterioration where there are pressures on such water bodies that may cause deterioration of status.

1.3 Impacts from Discharges from Urban Waste Water Treatment Plants

Water quality is impacted by discharges from urban waste water treatment plants. The level of impact depends upon the magnitude of the discharge and the ability of the receiving water to assimilate the pollution loading without affecting water quality status.

Nationally there are upwards of 900 discharges from urban waste water treatment plants. Nationally, the daily pollution loading entering waste water treatment plants approximates to:

- 380 tonnes BOD
- 47 tonnes Nitrogen
- 8 tonnes Phosphorous

Many of our rivers, lakes, estuaries and coastal waters that receive discharges from urban waste water treatment plants are classified as less than good status according to the classification system developed for the purpose of implementing the Water Framework Directive. It is evident that in many cases, discharges from urban waste water treatment plants are the cause, or contribute to the less than good status.

There is evidence from monitoring data to indicate that discharges from wastewater treatment plants are, or may be, the primary cause of the less than good status. The evidence may be further supported by information indicating that there is insufficient dilution available in the receiving waters to assimilate the pollution loading from the discharge from the treatment plant. In addition there is a risk of deterioration in water quality status were treatment plants are at or approaching design capacity and where the performance is not in accordance with specified discharge standards. The failure to properly operate and maintain a treatment plant also poses a risk to the receiving water quality.

2.0 EXISTING LEGISLATION

2.1 Urban Waste Water Treatment Regulations (S.I. 254 of 2001)

The Urban Waste Water Treatment Directive and the implementing Regulations have been the primary legislative instruments concerning discharges from urban waste water treatment plants. The regulations have obligations for Local Authorities in respect of the collection, treatment, and monitoring of urban waste water.

In the case of urban waste water entering collection systems, a sanitary authority shall provide:

- Secondary treatment or equivalent treatment
 - in respect of all discharges to coastal waters with population equivalents greater than 10,000.
 - in respect of discharges to fresh waters and estuaries, agglomerations with a population equivalent equal to or greater than 2,000.
- More stringent treatment than secondary treatment for all discharges from agglomerations with a population equivalent of more than 10,000 into sensitive areas or into the relevant catchments of sensitive areas where discharges contributed to the pollution of these areas.
- Discharge from a treatment plant intended to provide secondary treatment shall comply with concentration values and minimum percentage reduction values stated in the Regulations.
- Discharge from a treatment plant that is intended to provide more stringent treatment shall comply with the concentration and minimum percentage reductions for Total Phosphorous and Total Nitrogen stated in the Regulations.
- A sanitary authority shall carry out, cause to be carried out or arrange for monitoring of discharges and waters subject to a discharge where there is a risk to water quality. The results of monitoring are to be submitted to the EPA.

The implementation of the Regulations has resulted in significant investment in waste water treatment. However, the rapid growth in the economy in the 10 year period leading up to 2007 has resulted in commercial and residential development beyond anticipated growth levels leading to deficits in waste water treatment capacity and infrastructure. The continued implementation of the Regulations through the Water Services Investment Programme will be necessary to address this imbalance.

2.2 European Communities (Quality of Shellfish Waters) Regulations (S.I.268 of 2006)

The purpose of S.I. 268 is to give effect to Directive 79/923/EEC on the quality required of shellfish waters. The regulations require that public authorities perform their functions in a manner that will promote compliance with the quality standards set out in the Regulations and shall take such actions necessary to comply with any programme established by the Minister in accordance with the regulations.

Pollution Reduction Programmes (PRPs) have been prepared for shellfish waters. These are expected to be approved by the Minister in 2010. Once approved, it will become incumbent on Local Authorities to implement measures that are contained in the PRPs that are relevant to their functions.

The PRPs identify the pressures in the catchments of shellfish waters (including discharges from waste water treatment plants) and the measures to be implemented as part of the action programme. Local Authorities will be required to implement this action programme.

2.3 Waste Water Discharge (Authorisation) Regulations S.I. No. 684 of 2007)

The Waste Water Discharge Authorisation Regulations were made, in addition to other purposes, to prevent and reduce the pollution of waters by waste water discharges and for the purposes of giving effect to Article 11(3)(c) of the Water Framework Directive requiring prior regulation of point source discharges.

The regulations introduce a system of licensing by the EPA of discharges of waste water from urban waste water treatment plants. Local Authorities are required to apply for a licence and to comply with the conditions attached to any licence issued by the EPA.

The Regulations also require planning authorities and An Bord Pleanála to refuse permission or approval of a development, or limit the scale of a development that involves a waste water discharge from a waste water works where it considers that the discharge would cause or exacerbate a breach of emission limits and controls.

3.0 IDENTIFICATION AND PRIORITISATION OF MEASURES FOR WASTE WATER TREATMENT PLANTS

3.1 Sources of Information

3.1.1 Information compiled by the EPA

Local Authorities are required to submit, on an annual basis, information to the EPA on the treatment and discharge of urban waste water within their functional area. Information must be submitted for all agglomerations with a population equivalent of 500 or greater. The information submitted by the local authorities is referred to as the Local Authority Returns. The information returned by the local authorities is compiled in a national database by the EPA. This database represents the most comprehensive record of urban waste water discharges.

3.1.2 Applications for Licences to Discharge

The introduction of the Regulations concerning the authorisation of discharges of urban waste water provided a means of checking, verifying and updating the information contained in the EPA database. The application for a discharge licence required the applicant to submit detailed information on the waste water treatment plant and the receiving waters including:-

- Coordinates for the discharge point
- Population equivalent of the catchment served by the WWTP
- Quantity of flow to the WWTP
- Information on approved developments
- Design Capacity of the WWTP
- Information on treated effluent monitoring data
- Information on receiving water quality

The information extracted from the discharge licence applications was considered to be more accurate than the information contained in the EPA database. Where there was a conflict in the information, the details in the licence application was taken to be more correct and used in the preparation of the programme of measures.

3.2 Identification of Measures

3.2.1 Measures Intended to Achieve Compliance with Existing Legislation

The programme of measures is required to include measures necessary for compliance with existing legislation. With regard to urban waste water treatment plants the Urban Waste Water Treatment Regulations and the Regulations concerning the Quality of shellfish waters must be complied with. Compliance is mandatory and therefore any measures identified were considered to be of the highest priority in the programme of measures.

A review of the data on waste water treatment plants was carried out to identify agglomerations and treatment plants where measures were necessary to ensure compliance with existing legislation. All agglomerations and treatment plants were tested against the primary requirements of the legislation.

Test carried out for compliance with existing legislation is shown in Figure 1.

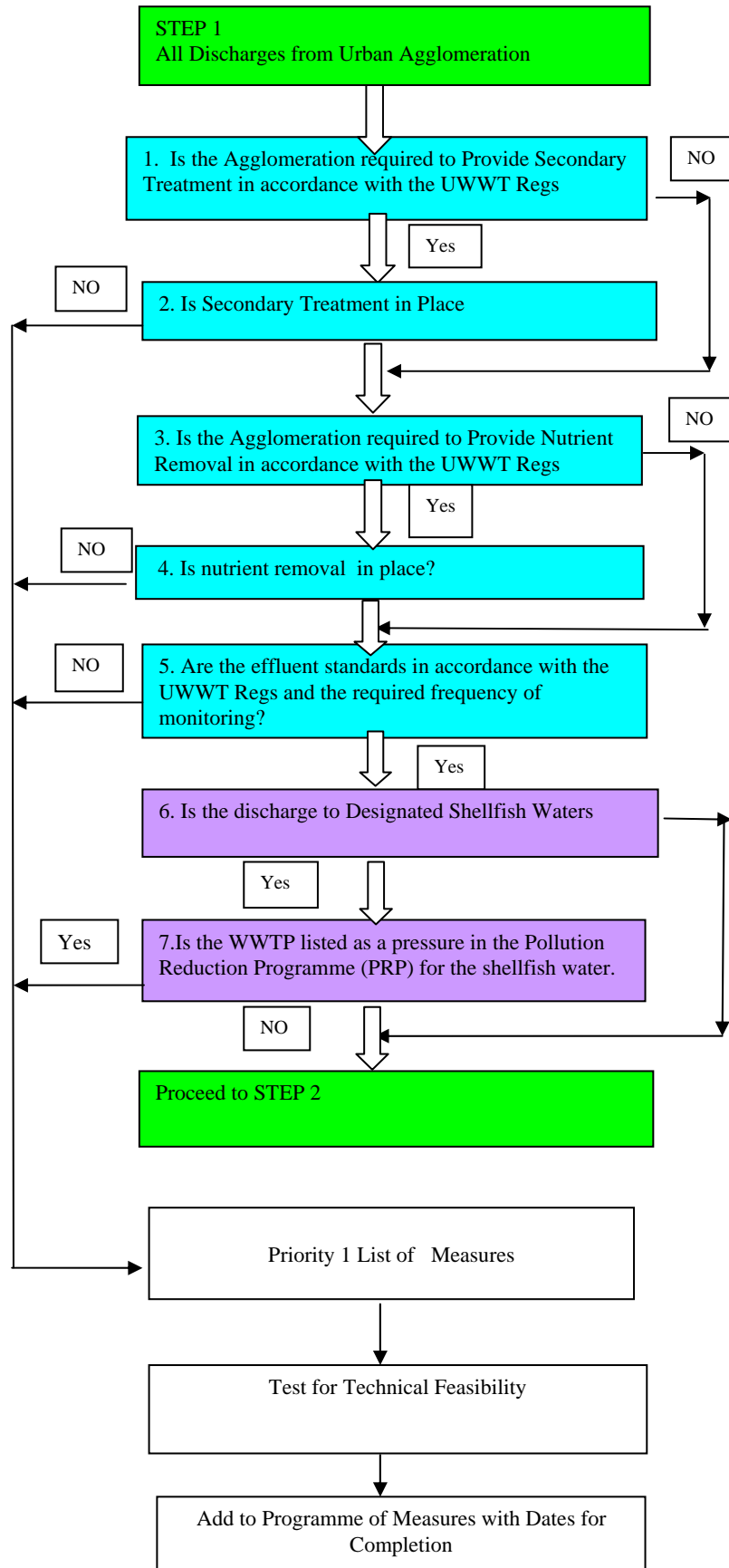


Figure 1 – Test for Compliance with Existing Legislation

Each agglomeration and wastewater treatment plant was tested against Items 1 to 7 in Figure 1 and appropriate measures identified as follows.

1. Is the waste water from the agglomeration required to receive secondary treatment?
2. Is secondary treatment in place?
Were this requirement was not being complied with the measure is *provide secondary treatment* (Table 1 – Appendix A)
3. Is the waste water from the agglomeration required to be subject to nutrient removal?
4. Is nutrient removal in place?
Were this requirement was not being complied with the measure is *provide nutrient removal* (Table 1 – Appendix A)
5. Are the effluent standards in compliance with the requirements of the Regulations?
Has the required number of samples been taken?
Where these requirements have not being complied with the measure is *implement an appropriate performance management system.* (Table 4 – Appendix ?)
6. Is the waste water treatment plant discharging to designated shellfish waters?
7. Is the waste water treatment plant identified in the PRP as a pressure to the quality of such waters?
If the wastewater treatment plant is identified in the PRP the measure is *commence implementation of the PRP.* (Table 3 – Appendix C)

3.2.2 Measures Intended to Address Identified Impacts or Risks to Status

3.2.2.1 A receiving water is at risk from a discharge from a waste water treatment plant where there is a deficiency in the capacity at the treatment plant or where the receiving water does not have sufficient flow to provide dilution of the discharge to meet water quality standards. In addition, monitoring in the receiving water may indicate that the discharge is contributing to the deterioration in quality status. Furthermore some receiving waters may be designated as protected areas. Such areas should receive priority in the implementation of the measures in consideration of their special status.

3.2.2.2 Biological river water quality monitoring is carried out by the EPA. The EPA monitoring programme includes approximately 3150 monitoring stations covering 13,000km of river channel. The results of monitoring are reported in accordance with the EPA's Q-rating classification system. The relationship between the Q-rating and the biological quality required for good status under the Water Framework Directive is as follows:

Q Value	WFD Quality Status
Q5,	High
Q4, Q4-Q5	Good
Q3, Q3-Q4	Moderate
Q2, Q2-Q3	Poor
Q1, Q1-Q2	Bad

There is evidence to indicate that discharges from waste water treatment plants are causing a deterioration in water quality. This evidence is strongest where monitoring stations are located in close proximity upstream and downstream of the location of a discharge.

- 3.2.2.3 All waste water treatment plants were tested for deficiencies, lack of assimilative capacity in the receiving waters, evidence of impact and protected area status. Measures were identified to mitigate the risk and impacts and priority was given in the programme of measures to treatment plants discharging to protected areas.

The methodology for the assessment of the waste water treatment plants is represented in Figure 2.

- 3.2.2.4 The information gathered on waste water treatment plants was reviewed to compare the reported loading to the waste water treatment plant and the design capacity of the treatment plant. Plants were identified that did not appear to have sufficient capacity to cater for the existing loading and the anticipated future loading in 2015.

Where a treatment plant does not have sufficient capacity for the existing water quality, the measure is ***Increase Plant Capacity***. (Included in Table1).

Where the treatment plant does not have capacity to cater for the anticipated loading in 2015 the measure is ***Ensure the Capacity of the Plant is not Exceeded***. (Included in Table 6).

- 3.2.2.5 Information was also gathered on the flow available in the receiving waters and compared against the quantity in the discharge. A determination was made if sufficient dilutions were available in the receiving waters such that water quality standards could be complied with in respect of BOD and Nutrients.

Where it was determined that sufficient dilutions were not available to achieve standards for BOD and where there was evidence of impact from the waste water treatment plant on water quality, the measure is ***Provide Tertiary Treatment or Relocate the Outfall***. (Included in Table 1).

Where it was determined that sufficient dilutions were not available to achieve standards for BOD but there was no evidence of impact from the waste water treatment plant on water quality, the measure is ***Investigate the need for Tertiary Treatment or Relocation of the Outfall***. (Included in Table 2).

Where it was determined that sufficient dilutions were not available to achieve standards for Nutrients and where there was evidence of impact from the waste water treatment plant on water quality, the measure is ***Provide Nutrient Removal or Relocate the Outfall***. (Included in Table 1).

Where it was determined that sufficient dilutions were not available to achieve standards for Nutrients but there was no evidence of impact from the waste water treatment plant on water quality, the measure is ***Investigate the need for Nutrient Removal or Relocation of the Outfall***. (Included in Table 2).

3.2.2.6 Where there was no deficiency identified in the capacity of the treatment plant or in the dilutions available in the receiving waters for the existing loading, the treatment plants were tested against the same criteria based on the anticipated loading in 2015. If the assessment showed that there would be deficit, the measure to be applied to the treatment plant is ***Ensure Capacity of Treatment Plant is not Exceeded***. (Included in Table 6)

3.2.2.7 There are discharges from waste water treatment plants where the monitoring data indicates deterioration in water quality from upstream to downstream of the point of discharge but there is no deficiency evident in either the capacity of the waste water treatment plant or in the dilutions available in the receiving waters. The deterioration in the water quality needs further investigation.

Many urban collection systems incorporate combined sewers that receive sewage and storm water. These combined sewer systems often include combined sewer overflows (CSOs) that allow for the discharge of untreated waste water in storm flow conditions. Where there is a deterioration in water quality that does appear to result from the treated effluent discharge the measure is ***Carry out investigations of the impacts from CSOs***. (Table 5)

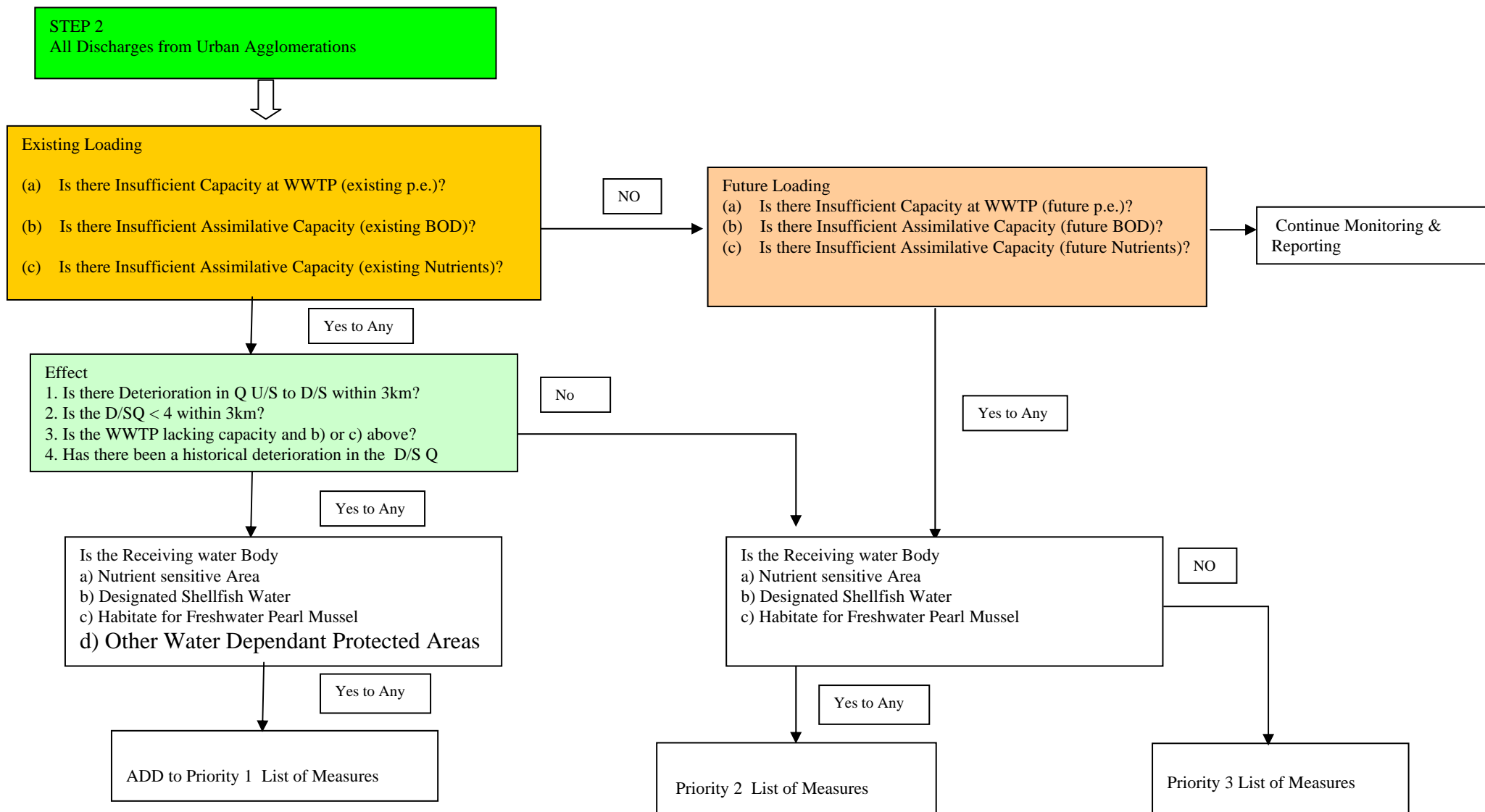


Figure 2: Methodology for Identifying Measures and Priority

4.0 PROGRAMME OF MEASURES AND DATES FOR COMPLETION

4.1 Tables of Measures

The measures that have been identified in respect of waste water treatment plants are presented in six tables as follows

- Table 1 – Plants Requiring Capital Investment
 - Provide Secondary Treatment
 - Increase capacity of waste water treatment plant
 - Provide tertiary treatment or relocate outfall
 - Provide nutrient removal or relocate outfall
- Table 2 – Agglomerations Requiring Further Investigations Prior to Capital Works
 - Investigate the need for increase in capacity
 - Investigate the need for tertiary treatment or relocation of the outfall
 - Investigate the need for nutrient removal or relocation of the outfall
- Table 3 – Plants required to commence the implementation of Pollution Reduction Programmes for Shellfish waters.
- Table 4 - Plants Requiring the Implementation of an Appropriate Performance System.
- Table 5 – Agglomerations requiring the Investigation of CSOs
- Table 6 – Plants required to ensure the capacity of the treatment plant is not exceeded.

The agglomerations and waste water treatment plants for which the above measures apply are identified in the tables in the Appendices. These lists result from the methodology described in Section 3 above.

4.2 Dates for Completion

Article 11 of the Water Framework Directive requires the establishment of a programme of measures to achieve the objectives set out in Article 4. The programme of measures is required to be established at the latest nine years after the date of entry into force of the Directive and to be made operational at the latest 12 years after the same date. In this context the programme of measure must be operational by 22nd December 2012.

The measures that have been identified in respect of urban waste water treatment plant discharges include capital works, investigations and management procedures. There are technical constraints and financial considerations that need to be taken into account when setting dates for completion within the programme of measures.

Measures that require capital works are subject to planning and procurement constraints. The planning process can be complex and may involve Environmental Impact Assessments, Compulsory Purchase Orders, Foreshore Licensing, applications for planning permission to An Bord Pleanála, planning appeals and oral hearings, land acquisition and wayleaves. The public procurement process requires competitions for the appointment of consultants and contractors.

The programme for completing a capital works project needs to take into account the timescale for planning and public procurement in addition to the time necessary to complete the Preliminary Report, Site Investigations, Detail Design and preparation of contract documents. Where a project has not yet completed the planning stage it is unlikely that the project can be completed within the timeframe of the first river basin management plan.

The identification of measures to be completed within the first river basin management plan considered the current status of projects and the constraints which would militate against completion by 2015. Many of the measures proposed have featured on Water Services Investment Programmes. Some projects have advanced beyond the planning stage and design stages and completion within the first river basin management plan is achievable. However, for many of the measures it is not possible to implement the measure by December 2012 or indeed prior to December 2015, due to the time required to advance a project from planning to completion of construction.

The Table 1 list of proposed capital works was circulated to the local authorities. Local Authorities were asked to consider the current status of projects and to identify projects that could be completed by 2012 or 2015 and projects where completion would be post 2015.

The dates for completion shown in Table 1 reflect the views of the Local Authorities as to what is practical to complete by 2015. It is expected that projects due for completion by 2015 will feature in the next Water Services Investment Programme.

Where it is not possible to implement measure by 2015 it may be necessary to extend the deadline for achieving objectives for the receiving water body. This matter is addressed in other background documents dealing with extended deadlines.

Measures that do not require capital works nor are subject to planning and procurement constraints are included in the programme of measures for completion within the first river basin management plan timeframe. These are listed in Tables 2 – 6.

In Table 2 the measure requires investigations prior to capital works. The date for completion refers to the completion of the investigations. In most cases the Local Authorities have indicated that the investigation will be completed by 2012. Some Local Authorities have indicated dates for completion beyond 2015.

In Table 3 the measure requires the commencement of the implementation of the Pollution Reduction Programmes (PRP) for shellfish waters. The implementation is to commence immediately the PRPs are made by the Minister under the provisions of the Waste Water Discharge (Authorisation) Regulations, S.I. 684 of 2007, which is expected to occur in 2010. It is recognised that the full implementation of the PRP may not be achievable by 2012 where the measures contained in the PRP require capital works or detailed investigations for which planning and procurement constraints apply.

In Table 4 the measure is implement an appropriate performance management system. This should occur in all cases prior to 2012. The performance management system should address any non-compliance issues concerning the achievement of the required discharge standards and the required frequency of sampling required under the Urban Waste Water Treatment Regulations.

In Table 5 the measure requires investigation of Combined Sewer Overflows (CSOs). In most cases the Local Authorities have indicated that the investigation will be completed by 2012. Some Local Authorities have indicated dates for completion beyond 2015.

In Table 6 the measure requires the steps are taken to ensure that the capacity of the treatment plant is not exceeded. In all cases this should be operational by 2012. This requires procedural arrangements within the local authorities which are programmed to be in place in 2010.

4.3 **Overall Summary**

Information was gathered on 881 waste water treatment plants from the EPA database and information contained in applications made to the EPA for a discharge licence. Information on a further 31 treatment plants was provided directly by local authorities.

Of the 912 treatment plants, 651 were identified as requiring the implementation of measures. The remaining 261 plants were either identified as not causing risk or there was insufficient impact data to determine risk.

Of the 651 plants in the programme of measures, 314 are programmed for completion beyond 2015. Of this number 244 discharges to 219 water bodies designated as less than good status. These water bodies will be considered for extended deadlines taking into consideration the impacts from other pressures which may be the primary cause of less than good status.

Appendix A
Plants requiring Capital Works

Table 1 - Plants requiring Capital Works

Point Source Discharge	County	Priority	Measure (Capital Works)	LA Proposed Date for Completion	WMU	WB Code	Extended Deadline
Hacketstown	Carlow	1	Increase capacity of treatment plant.	2015	Derreen	SE_12_2405	Yes
Rathvilly	Carlow	1	Increase capacity of treatment plant.	2015	SlaneyUpper	SE_12_1398	Yes
Tinryland	Carlow	2	Increase capacity of treatment plant.	2015	Burren	SE_14_1821	Yes
Tullow WWTP	Carlow	1	Increase capacity of treatment plant.	2015	SlaneyUpper	SE_12_1398	Yes
Bailieborough WWTP	Cavan	1	Increase capacity of treatment plant.	2021	BlackwaterNorth	EA_07_581	Yes
Bailieborough WWTP	Cavan	2	Provide tertiary treatment or relocate outfall.	2021	BlackwaterNorth	EA_07_581	Yes
Cavan WWTP	Cavan	1	Increase capacity of treatment plant.	2015	Woodford	NW_36_189	Yes
Cavan WWTP	Cavan	1	Increase capacity of treatment plant.	2015	Woodford	NW_36_189	Yes
Cavan WWTP	Cavan	1	Provide tertiary treatment or relocate outfall.	2015	Woodford	NW_36_189	Yes
Virginia WWTP	Cavan	1	Increase capacity of treatment plant.	2015	BlackwaterNorth	EA_07_1536_1	Yes
Kingscourt WWTP	Cavan	1	Increase capacity of treatment plant.	2015+	Glyde	NB_06_712	Yes
Ballycannon (Meelick) W	Clare	1	Provide tertiary treatment or relocate outfall.	2014	LoughDerg	SH_25_3896	Yes
Ballycannon (Meelick) W	Clare	1	Provide nutrient removal or relocate outfall.	2014	LoughDerg	SH_25_3896	Yes
Corofin	Clare	1	Increase capacity of treatment plant.	2010	Fergus	SH_27_1122	No
Corofin	Clare	1	Provide tertiary treatment or relocate outfall.	2010	Fergus	SH_27_1122	No
Ennis North	Clare	1	Increase capacity of treatment plant.	2011	Fergus	SH_27_1122	No
Ennis North	Clare	1	Provide tertiary treatment or relocate outfall.	2012	Fergus	SH_27_1122	No
Kilmihil WWTP	Clare	2	Provide tertiary treatment or relocate outfall.	2015	Inagh	SH_28_718	Yes
Kilmihil WWTP	Clare	2	Provide nutrient removal or relocate outfall.	2015	Inagh	SH_28_718	Yes
Milltown/Malbay WWTP	Clare	1	Increase capacity of treatment plant.	2014	Inagh	SH_070_0000	Yes
Quin WWTP	Clare	1	Increase capacity of treatment plant.	2011	Fergus	SH_27_1275	No
Shannon Town	Clare	1	Increase capacity of treatment plant.	2013	Fergus	SH_060_0800	Yes
Tulla WWTP	Clare	2	Provide tertiary treatment or relocate outfall.	2009	Fergus	SH_27_928	No
Tulla WWTP	Clare	2	Provide nutrient removal or relocate outfall.	2009	Fergus	SH_27_928	No
Carrigrenan	Cork City	1	Provide nutrient removal.	2015+	LowerLee/Owenboy	SW_060_0700	Yes

Table 1 - Plants requiring Capital Works

Point Source Discharge	County	Priority	Measure (Capital Works)	LA Proposed Date for Completion	WMU	WB Code	Extended Deadline
Charleville WWTP	Cork North	2	Provide tertiary treatment or relocate outfall.	2015	Maigue	SH_24_119	Yes
Charleville WWTP	Cork North	2	Provide nutrient removal or relocate outfall.	2015	Maigue	SH_24_119	Yes
Millstreet WWTP	Cork North	1	Increase capacity of treatment plant.	2015+	Blackwater	SW_18_917	Yes
Millstreet WWTP	Cork North	1	Provide tertiary treatment or relocate outfall.	2015+	Blackwater	SW_18_917	Yes
Millstreet WWTP	Cork North	1	Provide nutrient removal or relocate outfall.	2015+	Blackwater	SW_18_917	Yes
Rathcormac WWTP	Cork North	1	Increase capacity of treatment plant.	2009	BlackwaterBride	SW_18_1600	No
Ballincollig New WWTP	Cork South	1	Increase capacity of treatment plant.	2015	LowerLee/Owenboy	SW_19_1663	Yes
Ballingeary	Cork South	1	Increase capacity of treatment plant.	2015	UpperLee	SW_19_927	Yes
Ballingeary	Cork South	1	Provide tertiary treatment or relocate outfall.	2015	UpperLee	SW_19_927	Yes
Ballymakera WWTP	Cork South	1	Increase capacity of treatment plant.	2015	UpperLee	SW_19_915	Yes
Ballymakera WWTP	Cork South	1	Provide tertiary treatment or relocate outfall.	2015	UpperLee	SW_19_915	Yes
Carrigtwohill WWTP	Cork South	1	Increase capacity of treatment plant.	2015	Owenacurra	SW_060_0700	Yes
Cobh	Cork South	1	Provide secondary treatment.	2015	LowerLee/Owenboy	SW_060_0700	Yes
Cobh	Cork South	1	Provide nutrient removal.	2015	LowerLee/Owenboy	SW_060_0700	Yes
Killeens	Cork South	2	Increase capacity of treatment plant.	2009	LowerLee/Owenboy	SW_19_769	No
Killeens	Cork South	2	Provide tertiary treatment or relocate outfall.	2009	LowerLee/Owenboy	SW_19_769	No
Kinsale	Cork South	1	Provide secondary treatment.	2012	Bandon/Stick	SW_080_0100	No
Macroom U.D.C. WWTP	Cork South	1	Increase capacity of treatment plant.	2015	UpperLee	SW_19_1710	Yes
Passage/Monkstown	Cork South	1	Provide secondary treatment.	2015	LowerLee/Owenboy	SW_060_0700	Yes
Ringaskiddy Carrigaline C	Cork South	1	Provide secondary treatment.	2015	LowerLee/Owenboy	SW_060_0000	Yes
Riverstick WWTP	Cork South	2	Increase capacity of treatment plant.	2015	Bandon/Stick	SW_20_1209	Yes
Youghal	Cork South	1	Provide secondary treatment.	2015	Womnagh	SW_020_0100	Yes
Clonakilty WWTP	Cork West	1	Increase capacity of treatment plant.	2015	SkibbereenClonakilty	SW_100_0100	Yes
Drimoleague	Cork West	1	Increase capacity of treatment plant.	2015	SkibbereenClonakilty	SW_20_876	Yes
Dunmanway WWTP	Cork West	1	Increase capacity of treatment plant.	2015	UpperBandon	SW_20_2096	Yes
Dunmanway WWTP	Cork West	1	Provide tertiary treatment or relocate outfall.	2015	UpperBandon	SW_20_2096	Yes
Inchigeela	Cork West	1	Increase capacity of treatment plant.	2015	UpperLee	SW_19_1901	Yes

Table 1 - Plants requiring Capital Works

Point Source Discharge	County	Priority	Measure (Capital Works)	LA Proposed Date for Completion	WMU	WB Code	Extended Deadline
Inchigeela	Cork West	1	Provide tertiary treatment or relocate outfall.	2015	UpperLee	SW_19_1901	Yes
Skibbereen Sewerage Sch	Cork West	1	Provide secondary treatment.	2015	Skibbereen/Clonakilty	SW_130_0100	Yes
Ballintra	Donegal	1	Increase capacity of treatment plant.	2015+	DonegalBay	NW_37_2086	Yes
Ballybofey/Stranorlar WW	Donegal	1	Increase capacity of treatment plant.	2015+	Finn/Derg/Foyle	XB_01_1_2	Yes
Ballyliffen WWTP	Donegal	1	Increase capacity of treatment plant.	2015+	WestInishowen	NW_40_615	Yes
Ballyliffen WWTP	Donegal	1	Provide tertiary treatment or relocate outfall.	2015+	WestInishowen	NW_40_615	Yes
Ballyliffen WWTP	Donegal	1	Provide nutrient removal or relocate outfall.	2015+	WestInishowen	NW_40_615	Yes
Bridgend	Donegal	1	Increase capacity of treatment plant.	2015+	Crana	XB_39_1	Yes
Buncrana WWTP	Donegal	1	Increase capacity of treatment plant.	2015+	Crana	NW_220_0000	Yes
Bundoran WWTP	Donegal	1	Increase capacity of treatment plant.	2015+	LoughMelvin	NW_020_0000	Yes
Bundoran WWTP	Donegal	1	Provide tertiary treatment or relocate outfall.	2015+	LoughMelvin	NW_020_0000	Yes
Burnfoot	Donegal	1	Increase capacity of treatment plant.	2015+	Crana	NW_39_1105	Yes
Castlefinn WWTP	Donegal	1	Increase capacity of treatment plant.	2015+	Finn/Derg/Foyle	XB_01_1_3	Yes
Castlefinn WWTP	Donegal	1	Provide tertiary treatment or relocate outfall.	2015+	Finn/Derg/Foyle	XB_01_1_3	Yes
Clonmany	Donegal	2	Increase capacity of treatment plant.	2015+	WestInishowen	NW_40_1082	Yes
Convoy WWTP	Donegal	2	Increase capacity of treatment plant.	2015+	Finn/Derg/Foyle	NW_01_1913	Yes
Convoy WWTP	Donegal	2	Provide tertiary treatment or relocate outfall.	2015+	Finn/Derg/Foyle	NW_01_1913	Yes
Creelough	Donegal	1	Increase capacity of treatment plant.	2015+	MulroyBay/Sheephaven	NW_38_4040	Yes
Culdaff	Donegal	1	Increase capacity of treatment plant.	2015+	WestInishowen	NW_230_0000	Yes
Fahan	Donegal	1	Increase capacity of treatment plant.	2015+	Crana	NW_220_0100	Yes
Glenties WWTP	Donegal	1	Increase capacity of treatment plant.	2015	Owenea	NW_38_1168	Yes
Glenties WWTP	Donegal	1	Provide tertiary treatment or relocate outfall.	2015	Owenea	NW_38_1168	Yes
Gweedore WWTP	Donegal	1	Provide secondary treatment.	2015+	Lennan/Clady/Owencarrow/Glaskeel	NW_38_4124	Yes
Kerrykeel	Donegal	1	Increase capacity of treatment plant.	2015+	MulroyBay/Sheephaven	NW_38_2210	Yes
Kilea WWTP	Donegal	2	Increase capacity of treatment plant.	2015+	Finn/Derg/Foyle	XB_01_12	Yes
Kilea WWTP	Donegal	2	Provide tertiary treatment or relocate outfall.	2015+	Finn/Derg/Foyle	XB_01_12	Yes

Table 1 - Plants requiring Capital Works

Point Source Discharge	County	Priority	Measure (Capital Works)	LA Proposed Date for Completion	WMU	WB Code	Extended Deadline
Killybegs WWTP	Donegal	1	Provide secondary treatment.	2012	RossanPoint	NW_070_0000	No
Killybegs WWTP	Donegal	1	Provide nutrient removal.	2012	RossanPoint	NW_070_0000	No
Killybegs WWTP	Donegal	1	Provide tertiary treatment or relocate outfall.	2012	RossanPoint	NW_070_0000	No
Killybegs WWTP	Donegal	1	Provide nutrient removal or relocate outfall.	2015	RossanPoint	NW_070_0000	Yes
Kilmacrennan WWTP	Donegal	1	Increase capacity of treatment plant.	2015	Lennan/Clady/Owencarrow/Glaskeel	NW_39_388	Yes
Kilmacrennan WWTP	Donegal	1	Provide tertiary treatment or relocate outfall.	2015	Lennan/Clady/Owencarrow/Glaskeel	NW_39_388	Yes
Letterkenny WWTP	Donegal	1	Provide secondary treatment.	2012	Swilly	NW_220_0100	No
Letterkenny WWTP	Donegal	1	Increase capacity of treatment plant.	2012	Swilly	NW_220_0100	No
Letterkenny WWTP	Donegal	1	Provide nutrient removal or relocate outfall.	2012	Swilly	NW_220_0100	No
Lifford WWTP	Donegal	1	Increase capacity of treatment plant.	2015	Finn/Derg/Foyle	NW_250_0100	Yes
Milford, Donegal	Donegal	1	Increase capacity of treatment plant.	2015+	Lennan/Clady/Owencarrow/Glaskeel	NW_39_1600	Yes
Milford, Donegal	Donegal	1	Provide tertiary treatment or relocate outfall.	2015+	Lennan/Clady/Owencarrow/Glaskeel	NW_39_1600	Yes
Milford, Donegal	Donegal	1	Provide nutrient removal or relocate outfall.	2015+	Lennan/Clady/Owencarrow/Glaskeel	NW_39_1600	Yes
Mountcharles	Donegal	1	Increase capacity of treatment plant.	2015+	DonegalBay	NW_37_3637	Yes
Moville no. 1 WWTP	Donegal	1	Provide secondary treatment.	2015+	LoughFoyle	NW_40_516	Yes
Moville no. 1 WWTP	Donegal	2	Increase capacity of treatment plant.	2015+	LoughFoyle	NW_40_516	Yes
Moville no. 1 WWTP	Donegal	2	Provide tertiary treatment or relocate outfall.	2015+	LoughFoyle	NW_40_516	Yes
Newtowncunningham WWTP	Donegal	1	Increase capacity of treatment plant.	2015+	Swilly	NW_39_2252	Yes
Newtowncunningham WWTP	Donegal	1	Provide tertiary treatment or relocate outfall.	2015+	Swilly	NW_39_2252	Yes
Newtowncunningham WWTP	Donegal	1	Provide nutrient removal or relocate outfall.	2015+	Swilly	NW_39_2252	Yes
Pettigo	Donegal	1	Increase capacity of treatment plant.	2015+	ErneWest	XB_36_west_4	Yes
Ramelton WWTP	Donegal	1	Increase capacity of treatment plant.	2015+	Lennan/Clady/Owencarrow/Glaskeel	NW_220_0100	Yes
Raphoe WWTP	Donegal	1	Increase capacity of treatment plant.	2015+	Finn/Derg/Foyle	NW_01_441	Yes
Raphoe WWTP	Donegal	2	Provide tertiary treatment or relocate outfall.	2015+	Finn/Derg/Foyle	NW_01_441	Yes
Raphoe WWTP	Donegal	2	Provide nutrient removal or relocate outfall.	2015+	Finn/Derg/Foyle	NW_01_441	Yes
Rathmullan no. 1 WWTP	Donegal	1	Increase capacity of treatment plant.	2015+	LoughSwillyWest	NW_220_0100	Yes
St Johnston	Donegal	1	Increase capacity of treatment plant.	2015+	Finn/Derg/Foyle	NW_01_1907	Yes

Table 1 - Plants requiring Capital Works

Point Source Discharge	County	Priority	Measure (Capital Works)	LA Proposed Date for Completion	WMU	WB Code	Extended Deadline
Ringsend WWTP	Dublin City	1	Provide nutrient removal.	2012	Dodder	EA_090_0300	No
Ringsend WWTP	Dublin City	1	Increase capacity of treatment plant.	2012	Dodder	EA_090_0300	No
Shanganagh WWTP	Dun Laoghaire/Rathdown	1	Provide secondary treatment.	2012	Shanganagh	EA_100_0000	No
Garristown	Fingal	2	Provide tertiary treatment or relocate outfall.	2015	Delvin	EA_08_238	Yes
Garristown	Fingal	2	Provide nutrient removal or relocate outfall.	2015	Delvin	EA_08_238	Yes
Toberburr WWTP	Fingal	2	Provide tertiary treatment or relocate outfall.	2015	Broadmeadow	EA_08_670	Yes
Ahascragh	Galway County	2	Increase capacity of treatment plant.	2021	Suck	SH_26_3041	Yes
Athenry WWTP	Galway County	2	Provide tertiary treatment or relocate outfall.	2015	Clarinbridge	WE_29_310	Yes
Ballygar WWTP	Galway County	1	Increase capacity of treatment plant.	2021	Suck	SH_26_1447_3	Yes
Ballygar WWTP	Galway County	1	Provide tertiary treatment or relocate outfall.	2021	Suck	SH_26_1447_3	Yes
Ballygar WWTP	Galway County	1	Provide nutrient removal or relocate outfall.	2021	Suck	SH_26_1447_3	Yes
Clifden WWTP	Galway County	1	Provide secondary treatment.	2015	WestGalway	WE_270_0100	Yes
Eyrecourt WWTP	Galway County	2	Increase capacity of treatment plant.	2015	LoughDerg	SH_25_3524	Yes
Eyrecourt WWTP	Galway County	2	Provide tertiary treatment or relocate outfall.	2021	LoughDerg	SH_25_3524	Yes
Eyrecourt WWTP	Galway County	2	Provide nutrient removal or relocate outfall.	2021	LoughDerg	SH_25_3524	Yes
Glenamaddy WWTP	Galway County	1	Increase capacity of treatment plant.	2015	ClareRiver	WE_30_2490	Yes
Glenamaddy WWTP	Galway County	1	Provide tertiary treatment or relocate outfall.	2015	ClareRiver	WE_30_2490	Yes
Gort WWTP	Galway County	1	Provide tertiary treatment or relocate outfall.	2021	Kinvara	WE_29_2	Yes
Mountbellew WWTP	Galway County	1	Increase capacity of treatment plant.	2015	Suck	SH_26_2420	Yes
Mountbellew WWTP	Galway County	1	Provide tertiary treatment or relocate outfall.	2015	Suck	SH_26_2420	Yes
Oughterard WWTP	Galway County	1	Increase capacity of treatment plant.	2015	Corrib	WE_30_3396	Yes
Abbeystorney	Kerry	2	Increase capacity of treatment plant.	2015+	Feale	SH_23_806	Yes
Abbeystorney	Kerry	2	Provide tertiary treatment or relocate outfall.	2015+	Feale	SH_23_806	Yes
Abbeystorney	Kerry	2	Provide nutrient removal or relocate outfall.	2015+	Feale	SH_23_806	Yes

Table 1 - Plants requiring Capital Works

Point Source Discharge	County	Priority	Measure (Capital Works)	LA Proposed Date for Completion	WMU	WB Code	Extended Deadline
Anascaul	Kerry	2	Increase capacity of treatment plant.	2015+	NorthDingleBay	SW_22_3990	Yes
Ardfert WWTP	Kerry	2	Increase capacity of treatment plant.	2015	NorthKerry/TraleeBay	SH_23_427	Yes
Ardfert WWTP	Kerry	2	Provide tertiary treatment or relocate outfall.	2015	NorthKerry/TraleeBay	SH_23_427	Yes
Ardfert WWTP	Kerry	2	Provide nutrient removal or relocate outfall.	2015	NorthKerry/TraleeBay	SH_23_427	Yes
Ballylongford Septic Tank	Kerry	1	Increase capacity of treatment plant.	2015	Deel/ShannonEstuary	SH_24_1612	Yes
Ballylongford Septic Tank	Kerry	1	Provide tertiary treatment or relocate outfall.	2015	Deel/ShannonEstuary	SH_24_1612	Yes
Castleisland WWTP	Kerry	2	Provide tertiary treatment or relocate outfall.	2015+	NorthDingleBay	SW_22_3452	Yes
Castleisland WWTP	Kerry	2	Provide nutrient removal or relocate outfall.	2015+	NorthDingleBay	SW_22_3452	Yes
Fieries	Kerry	1	Increase capacity of treatment plant.	2012	NorthDingleBay	SW_22_3118	No
Fieries	Kerry	1	Provide tertiary treatment or relocate outfall.	2012	NorthDingleBay	SW_22_3118	No
Fieries	Kerry	1	Provide nutrient removal or relocate outfall.	2012	NorthDingleBay	SW_22_3118	No
Glenbeigh Imhoff Tank	Kerry	1	Increase capacity of treatment plant.	2015+	SouthDingleBay	SW_22_3936	Yes
Glenbeigh Imhoff Tank	Kerry	1	Provide tertiary treatment or relocate outfall.	2015+	SouthDingleBay	SW_22_3936	Yes
Kenmare WWTP	Kerry	1	Increase capacity of treatment plant.	2015	RoughlyFinnihy	SW_21_2495	Yes
Kenmare WWTP	Kerry	1	Provide tertiary treatment or relocate outfall.	2015	RoughlyFinnihy	SW_21_2495	Yes
Kenmare WWTP	Kerry	1	Provide nutrient removal or relocate outfall.	2015	RoughlyFinnihy	SW_21_2495	Yes
Kilflynn	Kerry	2	Increase capacity of treatment plant.	2015+	Feale	SH_23_721	Yes
Kilflynn	Kerry	2	Provide tertiary treatment or relocate outfall.	2015+	Feale	SH_23_721	Yes
Lixnaw	Kerry	1	Increase capacity of treatment plant.	2015+	Feale	SH_23_2945	Yes
Lixnaw	Kerry	1	Provide tertiary treatment or relocate outfall.	2015+	Feale	SH_23_2945	Yes
Moyvane (Newtown, Sand)	Kerry	2	Increase capacity of treatment plant.	2015+	Feale	SH_23_2532	Yes
Moyvane (Newtown, Sand)	Kerry	2	Provide tertiary treatment or relocate outfall.	2015+	Feale	SH_23_2532	Yes
Moyvane (Newtown, Sand)	Kerry	2	Provide nutrient removal or relocate outfall.	2015+	Feale	SH_23_2532	Yes
Ballitore	Kildare	2	Increase capacity of treatment plant.	2015	GreeseLerr	SE_14_1747	Yes

Table 1 - Plants requiring Capital Works

Point Source Discharge	County	Priority	Measure (Capital Works)	LA Proposed Date for Completion	WMU	WB Code	Extended Deadline
Ballitore	Kildare	2	Provide tertiary treatment or relocate outfall.	2015	GreeseLerr	SE_14_1747	Yes
Ballitore	Kildare	2	Provide nutrient removal or relocate outfall.	2015	GreeseLerr	SE_14_1747	Yes
Derrinturn WWTP	Kildare	1	Provide tertiary treatment or relocate outfall.	2012	Figile	EA_07_990	No
Derrinturn WWTP	Kildare	1	Provide nutrient removal or relocate outfall.	2012	Figile	EA_07_990	No
Kildare Town WWTP	Kildare	1	Increase capacity of treatment plant.	2015	BarrowMain	SE_14_842	Yes
Kildare Town WWTP	Kildare	2	Provide tertiary treatment or relocate outfall.	2015	BarrowMain	SE_14_842	Yes
Kilmeague WWTP	Kildare	1	Increase capacity of treatment plant.	2012	Liffey	EA_09_1870_2	No
Leixlip WWTP	Kildare	1	Increase capacity of treatment plant.	2012	Liffey	EA_09_1870_5	No
Leixlip WWTP	Kildare	1	Provide tertiary treatment or relocate outfall.	2012	Liffey	EA_09_1870_5	No
Osberstown WWTP	Kildare	1	Increase capacity of treatment plant.	2015	Liffey	EA_09_1870_3	Yes
Osberstown WWTP	Kildare	1	Provide tertiary treatment or relocate outfall.	2015	Liffey	EA_09_1870_3	Yes
Castlecomer Sewerage Sch	Kilkenny	1	Increase capacity of treatment plant.	2015	DIInin	SE_15_109	Yes
Castlecomer Sewerage Sch	Kilkenny	1	Provide tertiary treatment or relocate outfall.	2015	DIInin	SE_15_109	Yes
Castlecomer Sewerage Sch	Kilkenny	1	Provide nutrient removal or relocate outfall.	2015+	DIInin	SE_15_109	Yes
Clogh-Moneenroe Sewera	Kilkenny	1	Increase capacity of treatment plant.	2012	DIInin	SE_15_109	No
Freshford Sewerage Scher	Kilkenny	1	Increase capacity of treatment plant.	2012	NoreMain	SE_15_946	No
Freshford Sewerage Scher	Kilkenny	1	Provide tertiary treatment or relocate outfall.	2012	NoreMain	SE_15_946	No
Johnstown	Kilkenny	1	Increase capacity of treatment plant.	2015+	Erkina	SE_15_196	Yes
Kells	Kilkenny	1	Increase capacity of treatment plant.	2015+	Kings	SE_15_1819	Yes
Kells	Kilkenny	1	Provide tertiary treatment or relocate outfall.	2015+	Kings	SE_15_1819	Yes
Kilkenny City (Purcellsind	Kilkenny	1	Provide nutrient removal.	2012	NoreMain	SE_15_1994_4	No
Kilkenny City (Purcellsind	Kilkenny	1	Provide tertiary treatment or relocate outfall.	2012	NoreMain	SE_15_1994_4	No
Kilkenny City (Purcellsind	Kilkenny	1	Provide nutrient removal or relocate outfall.	2012	NoreMain	SE_15_1994_4	No
Paulstown Sewerage Sche	Kilkenny	1	Increase capacity of treatment plant.	2015	BarrowMain	SE_14_196_5	Yes

Table 1 - Plants requiring Capital Works

Point Source Discharge	County	Priority	Measure (Capital Works)	LA Proposed Date for Completion	WMU	WB Code	Extended Deadline
Paulstown Sewerage Sche	Kilkenny	1	Provide tertiary treatment or relocate outfall.	2015	BarrowMain	SE_14_196_5	Yes
Paulstown Sewerage Sche	Kilkenny	1	Provide nutrient removal or relocate outfall.	2015	BarrowMain	SE_14_196_5	Yes
Stonyford Sewerage Sche	Kilkenny	1	Increase capacity of treatment plant.	2015	Kings	SE_15_1991	Yes
Stonyford Sewerage Sche	Kilkenny	1	Provide tertiary treatment or relocate outfall.	2015	Kings	SE_15_1991	Yes
Stonyford Sewerage Sche	Kilkenny	1	Provide nutrient removal or relocate outfall.	2015	Kings	SE_15_1991	Yes
Urlingford Sewerage Sche	Kilkenny	1	Increase capacity of treatment plant.	2015	Erkina	SE_15_196	Yes
Bennettsbridge Sewerage	Kilkenny	1	Increase capacity of treatment plant.	2015	NoreMain	SE_15_1994_5	Yes
Ballyhale-Knocktopher Se	Kilkenny	1	Increase capacity of treatment plant.	2015	NoreMain	SE_15_827	Yes
Ballyhale-Knocktopher Se	Kilkenny	2	Provide tertiary treatment or relocate outfall.	2015	NoreMain	SE_15_827	Yes
Ballyhale-Knocktopher Se	Kilkenny	2	Provide nutrient removal or relocate outfall.	2015	NoreMain	SE_15_827	Yes
Abbeyleix WWTP	Laois	1	Increase capacity of treatment plant.	2012	NoreUpper	SE_15_1938	No
Abbeyleix WWTP	Laois	1	Provide tertiary treatment or relocate outfall.	2012	NoreUpper	SE_15_1938	No
Ballinakill WWTP	Laois	1	Increase capacity of treatment plant.	2012	NoreMain	SE_15_1370	No
Ballinakill WWTP	Laois	1	Provide tertiary treatment or relocate outfall.	2012	NoreMain	SE_15_1370	No
Ballinakill WWTP	Laois	1	Provide nutrient removal or relocate outfall.	2012	NoreMain	SE_15_1370	No
Ballyroan	Laois	1	Increase capacity of treatment plant.	2012	NoreUpper	SE_14_196_3	No
Ballyroan	Laois	1	Provide tertiary treatment or relocate outfall.	2012	NoreUpper	SE_14_196_3	No
Ballyroan	Laois	1	Provide nutrient removal or relocate outfall.	2012	NoreUpper	SE_14_196_3	No
Clonaslee WWTP	Laois	1	Increase capacity of treatment plant.	2012	Brosna	SH_25_570	No
Durrow WWTP	Laois	1	Increase capacity of treatment plant.	2012	Erkina	SE_15_198	No
Mountmellick WWTP	Laois	1	Provide tertiary treatment or relocate outfall.	2012	Barrow/Owenass/Triogue	SE_14_1718	No
Mountmellick WWTP	Laois	1	Provide nutrient removal or relocate outfall.	2012	Barrow/Owenass/Triogue	SE_14_1718	No
Mountrath WWTP	Laois	1	Increase capacity of treatment plant.	2012	NoreUpper	SE_15_1003	No
Mountrath WWTP	Laois	1	Provide tertiary treatment or relocate outfall.	2012	NoreUpper	SE_15_1003	No

Table 1 - Plants requiring Capital Works

Point Source Discharge	County	Priority	Measure (Capital Works)	LA Proposed Date for Completion	WMU	WB Code	Extended Deadline
Portarlinton WWTP	Laois	1	Provide tertiary treatment or relocate outfall.	2012	BarrowMain	SE_14_196_1	No
Rathdowney WWTP	Laois	1	Increase capacity of treatment plant.	2012	Erkina	SE_15_1033	No
Rathdowney WWTP	Laois	1	Provide tertiary treatment or relocate outfall.	2012	Erkina	SE_15_1033	No
Carrick on Shannon WWTP	Leitrim	1	Increase capacity of treatment plant.	2011	UpperShannon	SH_26_3090	No
Drumshanbo WWTP	Leitrim	1	Provide tertiary treatment or relocate outfall.	2015	UpperShannon	SH_26_59	Yes
Drumshanbo WWTP	Leitrim	1	Provide nutrient removal or relocate outfall.	2015	UpperShannon	SH_26_59	Yes
Mohill WWTP	Leitrim	2	Increase capacity of treatment plant.	2015	Camlin/Rinn	SH_26_1220	Yes
Mohill WWTP	Leitrim	2	Provide tertiary treatment or relocate outfall.	2015	Camlin/Rinn	SH_26_1220	Yes
Mohill WWTP	Leitrim	2	Provide nutrient removal or relocate outfall.	2015	Camlin/Rinn	SH_26_1220	Yes
Drumkeeran WWTP	Leitrim	2	Increase capacity of treatment plant.	2010	UpperShannon	SH_26_1232	No
Drumkeeran WWTP	Leitrim	2	Provide tertiary treatment or relocate outfall.	2010	UpperShannon	SH_26_1232	No
Drumkeeran WWTP	Leitrim	2	Provide nutrient removal or relocate outfall.	2010	UpperShannon	SH_26_1232	No
Kiltyclogher WWTP	Leitrim	2	Increase capacity of treatment plant.	2010	LoughMelvin	XB_35_4	No
Kinlough WWTP	Leitrim	1	Increase capacity of treatment plant.	2010	LoughMelvin	XB_35_6	No
Kinlough WWTP	Leitrim	1	Provide tertiary treatment or relocate outfall.	2010	LoughMelvin	XB_35_6	No
Kinlough WWTP	Leitrim	1	Provide nutrient removal or relocate outfall.	2010	LoughMelvin	XB_35_6	No
Tullaghan	Leitrim	2	Increase capacity of treatment plant.	2012	LoughMelvin	NW_020_0000	No
Abbeyfeale WWTP	Limerick County	1	Increase capacity of treatment plant.	2012	Feale	SH_23_2941	No
Askeaton WWTP	Limerick County	1	Increase capacity of treatment plant.	2015	Deel/ShannonEstuary	SH_060_0600	Yes
Athea	Limerick County	1	Increase capacity of treatment plant.	2015	Feale	SH_23_2514	Yes
Ballingarry, Limerick	Limerick County	2	Provide tertiary treatment or relocate outfall.	2015	Maigue	SH_24_1573	Yes
Ballingarry, Limerick	Limerick County	2	Provide nutrient removal or relocate outfall.	2015	Maigue	SH_24_1573	Yes
Bruff WWTP	Limerick County	1	Increase capacity of treatment plant.	2012	Maigue	SH_24_838	No
Caherconlish	Limerick County	2	Provide tertiary treatment or relocate outfall.	2012	Maigue	SH_25_513	No
Caherconlish	Limerick County	2	Provide nutrient removal or relocate outfall.	2012	Maigue	SH_25_513	No

Table 1 - Plants requiring Capital Works

Point Source Discharge	County	Priority	Measure (Capital Works)	LA Proposed Date for Completion	WMU	WB Code	Extended Deadline
Castletroy WWTP	Limerick County	1	Provide nutrient removal.	2012	LoughDerg	SH_25_3904_2	No
Dromcollagher	Limerick County	1	Increase capacity of treatment plant.	2015	Deel/ShannonEstuary	SH_24_1621	Yes
Dromcollagher	Limerick County	2	Provide tertiary treatment or relocate outfall.	2015	Deel/ShannonEstuary	SH_24_1621	Yes
Dromcollagher	Limerick County	2	Provide nutrient removal or relocate outfall.	2015	Deel/ShannonEstuary	SH_24_1621	Yes
Galbally, Limerick	Limerick County	1	Increase capacity of treatment plant.	2015	Aherlow	SE_16_1178	Yes
Hospital WWTP	Limerick County	1	Increase capacity of treatment plant.	2015	Maigue	SH_24_776	Yes
Hospital WWTP	Limerick County	2	Provide tertiary treatment or relocate outfall.	2015	Maigue	SH_24_776	Yes
Hospital WWTP	Limerick County	2	Provide nutrient removal or relocate outfall.	2015	Maigue	SH_24_776	Yes
Kilmallock WWTP	Limerick County	1	Increase capacity of treatment plant.	2012	Maigue	SH_24_189	No
Kilmallock WWTP	Limerick County	2	Provide tertiary treatment or relocate outfall.	2012	Maigue	SH_24_189	No
Kilmallock WWTP	Limerick County	2	Provide nutrient removal or relocate outfall.	2015	Maigue	SH_24_189	Yes
Murroe	Limerick County	1	Increase capacity of treatment plant.	2015	Mulkear	SH_25_2026	Yes
Murroe	Limerick County	1	Provide nutrient removal or relocate outfall.	2015	Mulkear	SH_25_2026	Yes
Newcastle West WWTP	Limerick County	1	Increase capacity of treatment plant.	2015	Deel/ShannonEstuary	SH_24_869	Yes
Oola	Limerick County	1	Increase capacity of treatment plant.	2015	Mulkear	SH_25_3237	Yes
Oola	Limerick County	2	Provide tertiary treatment or relocate outfall.	2015	Mulkear	SH_25_3237	Yes
Patrickswell WWTP	Limerick County	1	Increase capacity of treatment plant.	2012	Maigue	SH_24_1704	No
Drumlisk WWTP	Longford	2	Increase capacity of treatment plant.	2012	Camlin/Rinn	SH_26_1145	No
Drumlisk WWTP	Longford	2	Provide nutrient removal or relocate outfall.	2012	Camlin/Rinn	SH_26_1145	No
Edgeworthstown WWTP	Longford	2	Provide tertiary treatment or relocate outfall.	2015	Inny	SH_26_3870	Yes
Legan WWTP	Longford	2	Provide tertiary treatment or relocate outfall.	2012	Inny	SH_26_4098	No
Legan WWTP	Longford	2	Provide nutrient removal or relocate outfall.	2012	Inny	SH_26_4098	No
Longford WWTP	Longford	1	Provide nutrient removal.	2015	Camlin/Rinn	SH_26_3927_2	Yes
Longford WWTP	Longford	1	Provide tertiary treatment or relocate outfall.	2015	Camlin/Rinn	SH_26_3927_2	Yes
Longford WWTP	Longford	1	Provide nutrient removal or relocate outfall.	2015	Camlin/Rinn	SH_26_3927_2	Yes
Newtownforbes WWTP	Longford	1	Increase capacity of treatment plant.	2012	Camlin/Rinn	SH_26_3927_2	No

Table 1 - Plants requiring Capital Works

Point Source Discharge	County	Priority	Measure (Capital Works)	LA Proposed Date for Completion	WMU	WB Code	Extended Deadline
Newtownforbes WWTP	Longford	1	Provide tertiary treatment or relocate outfall.	2012	Camlin/Rinn	SH_26_3927_2	No
Dromiskin WWTP	Louth	1	Increase capacity of treatment plant.	2015	Fane	NB_040_0400	Yes
Balla	Mayo	1	Provide tertiary treatment or relocate outfall.	2013	Conn	WE_34_1731	Yes
Ballindine WWTP	Mayo	2	Provide tertiary treatment or relocate outfall.	2015	Mask	WE_30_2655	Yes
Ballyhaunis WWTP	Mayo	2	Provide tertiary treatment or relocate outfall.	2015	ClareRiver	WE_30_211	Yes
Castlebar WWTP	Mayo	1	Increase capacity of treatment plant.	2012	Conn	WE_34_3953	No
Castlebar WWTP	Mayo	1	Provide tertiary treatment or relocate outfall.	2012	Conn	WE_34_3953	No
Charlestown WWTP	Mayo	1	Increase capacity of treatment plant.	2013	Moy	WE_34_2464	Yes
Charlestown WWTP	Mayo	1	Provide tertiary treatment or relocate outfall.	2013	Moy	WE_34_2464	Yes
Charlestown WWTP	Mayo	1	Provide nutrient removal or relocate outfall.	2013	Moy	WE_34_2464	Yes
Foxford WWTP	Mayo	1	Increase capacity of treatment plant.	2014	Moy	WE_34_3982	Yes
Kiltimagh WWTP	Mayo	1	Increase capacity of treatment plant.	2012	Moy	WE_34_1461	No
Kiltimagh WWTP	Mayo	1	Provide tertiary treatment or relocate outfall.	2012	Moy	WE_34_1461	No
Athboy WWTP	Meath	1	Provide tertiary treatment or relocate outfall.	2015+	Athboy	EA_07_971	Yes
Athboy WWTP	Meath	1	Provide nutrient removal or relocate outfall.	2015+	Athboy	EA_07_971	Yes
Duleek WWTP	Meath	2	Provide tertiary treatment or relocate outfall.	2015+	Nanny	EA_08_814	Yes
Kells WWTP	Meath	1	Provide tertiary treatment or relocate outfall.	2015+	BlackwaterNorth	EA_07_1536_2	Yes
Kildalkey	Meath	1	Provide tertiary treatment or relocate outfall.	2015+	Athboy	EA_07_971	Yes
Kildalkey	Meath	1	Provide nutrient removal or relocate outfall.	2015+	Athboy	EA_07_971	Yes
Longwood WWTP	Meath	1	Increase capacity of treatment plant.	2015+	BlackwaterSouth	EA_07_954	Yes
Oldcastle WWTP	Meath	2	Increase capacity of treatment plant.	2015+	Inny	SH_26_2664	Yes

Table 1 - Plants requiring Capital Works

Point Source Discharge	County	Priority	Measure (Capital Works)	LA Proposed Date for Completion	WMU	WB Code	Extended Deadline
Oldcastle WWTP	Meath	2	Provide tertiary treatment or relocate outfall.	2015	Inny	SH_26_2664	Yes
Summerhill WWTP	Meath	2	Increase capacity of treatment plant.	2012	BoyneLower	EA_07_904	No
Summerhill WWTP	Meath	2	Provide tertiary treatment or relocate outfall.	2015+	BoyneLower	EA_07_904	Yes
Summerhill WWTP	Meath	2	Provide nutrient removal or relocate outfall.	2015+	BoyneLower	EA_07_904	Yes
Ballybay WWTP	Monaghan	2	Provide tertiary treatment or relocate outfall.	2015+	Woodford	NW_36_30	Yes
Ballybay WWTP	Monaghan	2	Provide nutrient removal or relocate outfall.	2015+	Woodford	NW_36_30	Yes
Carrickmacross WWTP	Monaghan	2	Increase capacity of treatment plant.	2015+	Glyde	NB_06_910	Yes
Carrickmacross WWTP	Monaghan	2	Provide tertiary treatment or relocate outfall.	2015	Glyde	NB_06_910	Yes
Castleblayney WWTP	Monaghan	1	Provide tertiary treatment or relocate outfall.	2015+	Fane	NB_06_56	Yes
Clontibret WWTP	Monaghan	2	Increase capacity of treatment plant.	2015+	Blackwater	XB_03_9	Yes
Clones WWTP	Monaghan	2	Increase capacity of treatment plant.	2015+	Erne East	XB_36_east_3	Yes
Borrisoleigh WWTP	North Tipp	2	Provide tertiary treatment or relocate outfall.	2015	ClodiaghNT	SE_16_3178	Yes
Cloughjordan WWTP	North Tipp	2	Increase capacity of treatment plant.	2015	Nenagh	SH_25_3530	Yes
Cloughjordan WWTP	North Tipp	2	Provide tertiary treatment or relocate outfall.	2015	Nenagh	SH_25_3530	Yes
Silvermines	North Tipp	2	Increase capacity of treatment plant.	2015	Nenagh	SH_25_3715	Yes
Silvermines	North Tipp	2	Provide tertiary treatment or relocate outfall.	2015	Nenagh	SH_25_3715	Yes
Templemore WWTP	North Tipp	1	Increase capacity of treatment plant.	2012	SuirUpper	SE_16_3997	No
Templetouhy	North Tipp	2	Provide tertiary treatment or relocate outfall.	2015	SuirUpper	SE_16_4121	Yes
Templetouhy	North Tipp	2	Provide nutrient removal or relocate outfall.	2015	SuirUpper	SE_16_4121	Yes
Toomevara	North Tipp	2	Increase capacity of treatment plant.	2015	Nenagh	SH_25_402	Yes
Ballingar WWTP	Offaly	2	Increase capacity of treatment plant.	2015	Brosna	SH_25_542	Yes
Ballingar WWTP	Offaly	2	Provide tertiary treatment or relocate outfall.	2015	Brosna	SH_25_542	Yes
Ballingar WWTP	Offaly	2	Provide nutrient removal or relocate outfall.	2015	Brosna	SH_25_542	Yes

Table 1 - Plants requiring Capital Works

Point Source Discharge	County	Priority	Measure (Capital Works)	LA Proposed Date for Completion	WMU	WB Code	Extended Deadline
Clonygowan WWTP	Offaly	2	Provide tertiary treatment or relocate outfall.	2015+	Figile	SE_14_1875	Yes
Clonygowan WWTP	Offaly	2	Provide nutrient removal or relocate outfall.	2015+	Figile	SE_14_1875	Yes
Daingean WWTP	Offaly	2	Provide tertiary treatment or relocate outfall.	2015	Figile	SE_14_1561	Yes
Edenderry WWTP	Offaly	1	Provide tertiary treatment or relocate outfall.	2015	BoyneUpper	EA_07_990	Yes
Geashill WWTP	Offaly	2	Provide tertiary treatment or relocate outfall.	2015+	Brosna	SH_25_542	Yes
Killeigh WWTP	Offaly	1	Provide tertiary treatment or relocate outfall.	2015+	Brosna	SH_25_550	Yes
Killeigh WWTP	Offaly	1	Provide nutrient removal or relocate outfall.	2015+	Brosna	SH_25_550	Yes
Moneygall WWTP	Offaly	2	Increase capacity of treatment plant.	2015	Nenagh	SH_25_3615	Yes
Moneygall WWTP	Offaly	2	Provide tertiary treatment or relocate outfall.	2015	Nenagh	SH_25_3615	Yes
Tullamore WWTP	Offaly	1	Increase capacity of treatment plant.	2012	Brosna	SH_25_3798	No
Tullamore WWTP	Offaly	1	Provide tertiary treatment or relocate outfall.	2012	Brosna	SH_25_3798	No
Ballintober WWTP	Roscommon	2	Provide tertiary treatment or relocate outfall.	2015	Suck	SH_26_1258	Yes
Ballintober WWTP	Roscommon	2	Provide nutrient removal or relocate outfall.	2015	Suck	SH_26_1258	Yes
Ballyleague WWTP	Roscommon	2	Increase capacity of treatment plant.	2012	Hind/LoughRee	SH_26_2855	No
Ballyleague WWTP	Roscommon	2	Provide nutrient removal or relocate outfall.	2012	Hind/LoughRee	SH_26_2855	No
Elphin WWTP	Roscommon	2	Increase capacity of treatment plant.	2012	UpperShannon	SH_26_2513	No
Elphin WWTP	Roscommon	2	Provide tertiary treatment or relocate outfall.	2012	UpperShannon	SH_26_2513	No
Elphin WWTP	Roscommon	2	Provide nutrient removal or relocate outfall.	2012	UpperShannon	SH_26_2513	No
Frenchpark WWTP	Roscommon	1	Increase capacity of treatment plant.	2012	UpperShannon	SH_26_3912	No
Rooskey	Roscommon	1	Increase capacity of treatment plant.	2012	UpperShannon	SH_26_3928	No
Roscommon WWTP	Roscommon	1	Increase capacity of treatment plant.	2015	Hind/LoughRee	SH_26_843	Yes
Roscommon WWTP	Roscommon	1	Provide tertiary treatment or relocate outfall.	2015	Hind/LoughRee	SH_26_843	Yes

Table 1 - Plants requiring Capital Works

Point Source Discharge	County	Priority	Measure (Capital Works)	LA Proposed Date for Completion	WMU	WB Code	Extended Deadline
Strokestown WWTP	Roscommon	2	Provide tertiary treatment or relocate outfall.	2012	UpperShannon	SH_26_1004	No
Strokestown WWTP	Roscommon	2	Provide nutrient removal or relocate outfall.	2012	UpperShannon	SH_26_1004	No
Ballymote WWTP	Sligo	2	Provide tertiary treatment or relocate outfall.	2015+	Ballysadare	WE_35_938	Yes
Ballymote WWTP	Sligo	2	Provide nutrient removal or relocate outfall.	2015+	Ballysadare	WE_35_938	Yes
Collooney WWTP	Sligo	1	Increase capacity of treatment plant.	2015+	Ballysadare	WE_35_2107	Yes
Grange WWTP	Sligo	2	Increase capacity of treatment plant.	2015	Garravogue	WE_35_4140	Yes
Grange WWTP	Sligo	2	Provide tertiary treatment or relocate outfall.	2015	Garravogue	WE_35_4140	Yes
Strandhill WWTP	Sligo	1	Increase capacity of treatment plant.	2015	Garravogue	WE_450_0000	Yes
Tubbercurry WWTP	Sligo	1	Increase capacity of treatment plant.	2015	Moy	WE_34_2633	Yes
Tubbercurry WWTP	Sligo	2	Provide tertiary treatment or relocate outfall.	2015	Moy	WE_34_2633	Yes
Tubbercurry WWTP	Sligo	2	Provide nutrient removal or relocate outfall.	2015	Moy	WE_34_2633	Yes
Fethard WWTP	South Tipp	1	Increase capacity of treatment plant.	2012	Anner	SE_16_440	No
Fethard WWTP	South Tipp	1	Provide tertiary treatment or relocate outfall.	2012	Anner	SE_16_440	No
Grangemockler WWTP	South Tipp	1	Increase capacity of treatment plant.	2012	SuirEstuary	SE_16_3309	No
Grangemockler WWTP	South Tipp	1	Provide tertiary treatment or relocate outfall.	2012	SuirEstuary	SE_16_3309	No
Limerick Junction	South Tipp	2	Increase capacity of treatment plant.	2012	Mulkear	SH_25_3875	No
Limerick Junction	South Tipp	2	Provide tertiary treatment or relocate outfall.	2012	Mulkear	SH_25_3875	No
Mullinahone WWTP	South Tipp	2	Increase capacity of treatment plant.	2012	Anner	SE_16_1363	No
Mullinahone WWTP	South Tipp	2	Provide tertiary treatment or relocate outfall.	2012	Anner	SE_16_1363	No
Mullinahone WWTP	South Tipp	2	Provide nutrient removal or relocate outfall.	2012	Anner	SE_16_1363	No
Tipperary WWTP	South Tipp	2	Increase capacity of treatment plant.	2012	Aherlow	SE_16_1127	No
Waterford WWTP	Waterford City	1	Provide secondary treatment.	2012	Suir Estuary	SE_100_0500	No
Ardmore WWTP	Waterford County	2	Increase capacity of treatment plant.	2015	ColliganMahon	SE_050_0000	Yes
Ballyduff WWTP	Waterford County	1	Increase capacity of treatment plant.	2015+	Blackwater	SW_18_2755	Yes
Cappoquin WWTP	Waterford County	1	Increase capacity of treatment plant.	2015	BlackwaterEstuary	SW_18_2765	Yes

Table 1 - Plants requiring Capital Works

Point Source Discharge	County	Priority	Measure (Capital Works)	LA Proposed Date for Completion	WMU	WB Code	Extended Deadline
Cappoquin WWTP	Waterford County	1	Provide tertiary treatment or relocate outfall.	2015	BlackwaterEstuary	SW_18_2765	Yes
Dunhill WWTP	Waterford County	2	Increase capacity of treatment plant.	2015	ColliganMahon	SE_17_647	Yes
Kilmacthomas WWTP	Waterford County	2	Increase capacity of treatment plant.	2015	ColliganMahon	SE_17_825	Yes
Portlaw WWTP	Waterford County	1	Increase capacity of treatment plant.	2015	SuirEstuary	SE_100_0500	Yes
Stradbally, Waterford	Waterford County	2	Increase capacity of treatment plant.	2015	ColliganMahon	SE_17_828	Yes
Stradbally, Waterford	Waterford County	2	Provide tertiary treatment or relocate outfall.	2015	ColliganMahon	SE_17_828	Yes
Castlepollard WWTP	Westmeath	2	Provide tertiary treatment or relocate outfall.	2015+	Inny	SH_26_1091	Yes
Moate WWTP	Westmeath	1	Increase capacity of treatment plant.	2015	Brosna	SH_25_567	Yes
Moate WWTP	Westmeath	2	Provide tertiary treatment or relocate outfall.	2015	Brosna	SH_25_567	Yes
Rochfortbridge WWTP	Westmeath	2	Provide tertiary treatment or relocate outfall.	2010	BoyneUpper	EA_07_1025	No
Rochfortbridge WWTP	Westmeath	2	Provide nutrient removal or relocate outfall.	2010	BoyneUpper	EA_07_1025	No
Ballycanew	Wexford	2	Increase capacity of treatment plant.	2015+	Owenavorrigh	SE_11_251	Yes
Ballycanew	Wexford	2	Provide nutrient removal or relocate outfall.	2015+	Owenavorrigh	SE_11_251	Yes
Bunclody WWTP	Wexford	1	Increase capacity of treatment plant.	2010	SlaneyLower	SE_12_924_2	No
Castlebridge WWTP	Wexford	1	Increase capacity of treatment plant.	2015+	SlaneyEstuary	SE_12_3	Yes
Clonroche	Wexford	2	Provide tertiary treatment or relocate outfall.	2015+	BoroUrrin	SE_12_2601	Yes
Clonroche	Wexford	2	Provide nutrient removal or relocate outfall.	2015+	BoroUrrin	SE_12_2601	Yes
Enniscorthy WWTP	Wexford	1	Provide nutrient removal.	2012	SlaneyLower	SE_040_0300	No
Ferns	Wexford	1	Increase capacity of treatment plant.	2015+	Bann	SE_12_921	Yes
Gorey WWTP	Wexford	1	Increase capacity of treatment plant.	2012	Owenavorrigh	SE_11_257	No
Gorey WWTP	Wexford	2	Provide tertiary treatment or relocate outfall.	2012	Owenavorrigh	SE_11_257	No
Gorey WWTP	Wexford	2	Provide nutrient removal or relocate outfall.	2012	Owenavorrigh	SE_11_257	No
Piercetown WWTP	Wexford	1	Increase capacity of treatment plant.	2015+	SlaneyEstuary	SE_12_149	Yes
Piercetown WWTP	Wexford	2	Provide tertiary treatment or relocate outfall.	2015+	SlaneyEstuary	SE_12_149	Yes
Piercetown WWTP	Wexford	2	Provide nutrient removal or relocate outfall.	2015+	SlaneyEstuary	SE_12_149	Yes

Table 1 - Plants requiring Capital Works

Point Source Discharge	County	Priority	Measure (Capital Works)	LA Proposed Date for Completion	WMU	WB Code	Extended Deadline
Taghmon WWTP	Wexford	1	Increase capacity of treatment plant.	2015+	BallyteigueBannow	SE_13_745	Yes
Taghmon WWTP	Wexford	2	Provide tertiary treatment or relocate outfall.	2015+	BallyteigueBannow	SE_13_745	Yes
Arthurstown	Wexford	1	Increase capacity of treatment plant.	2012	BallyteigueBannow	SE_100_0100	No
Ballyhack	Wexford	1	Increase capacity of treatment plant.	2012	BallyteigueBannow	SE_100_0100	No
Camolin North	Wexford	1	Increase capacity of treatment plant.	2015	Bann	SE_12_921	Yes
Camolin South	Wexford	1	Provide nutrient removal or relocate outfall.	2015	Bann	SE_12_2511	Yes
Camolin North	Wexford	1	Increase capacity of treatment plant.	2015	Bann	SE_12_921	Yes
Camolin South	Wexford	1	Provide nutrient removal or relocate outfall.	2015	Bann	SE_12_2511	Yes
Duncannon	Wexford	1	Increase capacity of treatment plant.	2012	BallyteigueBannow	SE_100_0100	No
Enniscorthy (Kilogoley)	Wexford	1	Increase capacity of treatment plant.	2012	SlaneyLower	SE_040_0300	No
New Ross	Wexford	1	Increase capacity of treatment plant.	2010	BarrowEstuary	SE_100_0200	No
Wellington Bridge	Wexford	1	Increase capacity of treatment plant.	2012	BallyteigueBannow	SE_090_0100	No
Ballymurn	Wexford	1	Increase capacity of treatment plant.	2015+	SlaneyEstuary	SE_12_2504	Yes
Arklow	Wicklow	1	Provide secondary treatment.	2021	Kilmurry	EA_150_0100	Yes
Bray WWTP	Wicklow	1	Provide secondary treatment.	2012	Newcastle	EA_100_0000	No
Carnew, Wicklow	Wicklow	2	Provide tertiary treatment or relocate outfall.	2015	Derry	SE_12_757	Yes
Carnew, Wicklow	Wicklow	2	Provide nutrient removal or relocate outfall.	2015	Derry	SE_12_757	Yes
Dunlavin Logatryna WW	Wicklow	2	Increase capacity of treatment plant.	2015	GreeseLerr	SE_14_1747	Yes
Dunlavin Milltown WWT	Wicklow	1	Increase capacity of treatment plant.	2015	GreeseLerr	SE_14_1747	Yes
Glenealy WWTP	Wicklow	2	Provide nutrient removal or relocate outfall.	2015	Rathnew	EA_10_588	Yes
Kilpedder WWTP	Wicklow	1	Increase capacity of treatment plant.	2012	Newcastle	EA_120_0100	No
Rathnew WWTP	Wicklow	1	Increase capacity of treatment plant.	2012	Rathnew	EA_10_1603	No
Rathnew WWTP	Wicklow	1	Provide tertiary treatment or relocate outfall.	2012	Rathnew	EA_10_1603	No
Rathnew WWTP	Wicklow	1	Provide nutrient removal or relocate outfall.	2012	Rathnew	EA_10_1603	No
Wicklow WWTP	Wicklow	1	Provide secondary treatment.	2012	Newcastle	EA_100_0000	No

Appendix B
Agglomerations requiring further investigation
prior to Capital Works

Table 2 - Agglomerations requiring further investigation prior to Capital Works

Point Source Discharge	County	Priority	Measure (Investigation before Capital Works)	LA Proposed Date for Completion	WMU	WB Code	Extended Deadline
Ballinkillin	Carlow	2	Investigate the need for tertiary treatment or for the relocation of the outfall.	2012	NoreMain	SE_14_1492	No
Ballinkillin	Carlow	2	Investigate the need for tertiary treatment or for the relocation of the outfall.	2012	NoreMain	SE_14_1492	No
Clonegal	Carlow	2	Investigate the need for increase in capacity of treatment plant.	2012	Derry	SE_12_2095	No
Kildavin	Carlow	3	Investigate the need for increase in capacity of treatment plant.	2015	SlaneyLower	SE_12_968	Yes
Nurney	Carlow	3	Investigate the need for tertiary treatment or for the relocation of the outfall.	2015	BarrowMain	SE_14_1102	Yes
OldLeighlin	Carlow	2	Investigate the need for increase in capacity of treatment plant.	2012	BarrowMain	SE_14_1131	No
Rathoe	Carlow	3	Investigate the need for increase in capacity of treatment plant.	2015	Burren	SE_14_1781	Yes
Arvagh WWTP	Cavan	3	Investigate the need for tertiary treatment or for the relocation of the outfall.	2015	ErneEast	NW_36_477	Yes
Ballinagh WWTP	Cavan	3	Investigate the need for tertiary treatment or for the relocation of the outfall.	2015	Woodford	NW_36_2100	Yes
Ballyjamesduff WWTP	Cavan	3	Investigate the need for tertiary treatment or for the relocation of the outfall.	2015	Inny	SH_26_2264	Yes
Kilnaleck WWTP	Cavan	3	Investigate the need for tertiary treatment or for the relocation of the outfall.	2015	ErneEast	NW_36_584	Yes

Table 2 - Agglomerations requiring further investigation prior to Capital Works

Point Source Discharge	County	Priority	Measure (Investigation before Capital Works)	LA Proposed Date for Completion	WMU	WB Code	Extended Deadline
Kingscourt WWTP	Cavan	3	Investigate the need for tertiary treatment or for the relocation of the outfall.	2015	Glyde	NB_06_712	Yes
Ballyvaughan WWTP	Clare	2	Investigate the need for increase in capacity of treatment plant.	2012	Kinvara	WE_110_0000	No
Clarecastle	Clare	2	Investigate the need for increase in capacity of treatment plant.	2012	Fergus	SH_060_1100	No
Kilkee	Clare	2	Investigate the need for increase in capacity of treatment plant.	2013	SouthClare/ShannonEstuary	SH_070_0000	Yes
Kilkishen	Clare	3	Investigate the need for tertiary treatment or for the relocation of the outfall.	2015	Fergus	SH_27_234	Yes
Kilrush	Clare	2	Investigate the need for increase in capacity of treatment plant.	2013	SouthClare/ShannonEstuary	SH_060_0000	Yes
Liscannor WWTP	Clare	2	Investigate the need for increase in capacity of treatment plant.	2012	Inagh	SH_100_0000	No
Lisdoonvarna WWTP	Clare	3	Investigate the need for tertiary treatment or for the relocation of the outfall.	2015	Inagh	SH_28_690	Yes
Dromahane WWTP	Cork North	2	Investigate the need for increase in capacity of treatment plant.	2015+	Blackwater	SW_18_2541	Yes
Dromina	Cork North	3	Investigate the need for tertiary treatment or for the relocation of the outfall.	2015+	Deel/ShannonEstuary	SH_24_846	Yes
Newtownshandrum	Cork North	3	Investigate the need for tertiary treatment or for the relocation of the outfall.	2015+	Maigne	SH_24_1044	Yes
Castlemartyr WWTP	Cork South	3	Investigate the need for tertiary treatment or for the relocation of the outfall.	2015	Womanagh	SW_19_1909	Yes

Table 2 - Agglomerations requiring further investigation prior to Capital Works

Point Source Discharge	County	Priority	Measure (Investigation before Capital Works)	LA Proposed Date for Completion	WMU	WB Code	Extended Deadline
Cloyne WWTP	Cork South	2	Investigate the need for increase in capacity of treatment plant.	2015	Blackwater	SW_060_0000	Yes
Coachford WWTP	Cork South	2	Investigate the need for increase in capacity of treatment plant.	2015+	LowerLee/Owenboy	SW_19_1663	Yes
Cobh	Cork South	2	Investigate the need for increase in capacity of treatment plant.	2015	LowerLee/Owenboy	SW_060_0700	Yes
Courtmacsherry Sewerage S	Cork South	2	Investigate the need for increase in capacity of treatment plant.	2015	SkibbereenClonakilty	SW_090_0200	Yes
Crookstown	Cork South	3	Investigate the need for increase in capacity of treatment plant.	2012	LowerLee/Owenboy	SW_19_1477	No
Glenville	Cork South	2	Investigate the need for increase in capacity of treatment plant.	2012	BlackwaterBride	SW_18_1183	No
Innishannon WWTP	Cork South	2	Investigate the need for increase in capacity of treatment plant.	2015	Bandon/Stick	SW_080_0300	Yes
Knockraha	Cork South	3	Investigate the need for tertiary treatment or for the relocation of the outfall.	2015+	Glashaboy	SW_19_742	Yes
Midleton WWTP	Cork South	2	Investigate the need for increase in capacity of treatment plant.	2012	Owennacurra	SW_060_0300	No
Passage/Monkstown	Cork South	2	Investigate the need for increase in capacity of treatment plant.	2015	LowerLee/Owenboy	SW_060_0700	Yes
Ringaskiddy	Cork South	2	Investigate the need for increase in capacity of treatment plant.	2015	LowerLee/Owenboy	SW_060_0000	Yes
Ringaskiddy Carrigaline Cr	Cork South	2	Investigate the need for increase in capacity of treatment plant.	2015	LowerLee/Owenboy	SW_060_0000	Yes
Whitegate/Aghada	Cork South	2	Investigate the need for increase in capacity of treatment plant.	2015	Womanagh	SW_060_0000	Yes
Youghal	Cork South	2	Investigate the need for increase in capacity of treatment plant.	2015	Womanagh	SW_020_0100	Yes
Baltimore WWTP	Cork West	2	Investigate the need for increase in capacity of treatment plant.	2015	SkibbereenClonakilty	SW_130_0100	Yes

Table 2 - Agglomerations requiring further investigation prior to Capital Works

Point Source Discharge	County	Priority	Measure (Investigation before Capital Works)	LA Proposed Date for Completion	WMU	WB Code	Extended Deadline
Castletownshend Sewerage	Cork West	3	Investigate the need for increase in capacity of treatment plant.	2015	SkibbereenClonakilty	SW_110_0000	Yes
Goleen - Septic Tank Outfall	Cork West	2	Investigate the need for increase in capacity of treatment plant.	2015+	SkibbereenClonakilty	SW_140_0000	Yes
Rosscarbery/ Owenahincha	Cork West	3	Investigate the need for increase in capacity of treatment plant.	2015	SkibbereenClonakilty	SW_110_0000	Yes
Schull WWTP	Cork West	2	Investigate the need for increase in capacity of treatment plant.	2015	SkibbereenClonakilty	SW_140_0000	Yes
Shannonvale Village	Cork West	2	Investigate the need for increase in capacity of treatment plant.	2015	SkibbereenClonakilty	SW_20_2251	Yes
Skibbereen Sewerage Schem	Cork West	2	Investigate the need for increase in capacity of treatment plant.	2015	SkibbereenClonakilty	SW_130_0100	Yes
Timoleague Village - Comb	Cork West	2	Investigate the need for increase in capacity of treatment plant.	2015	SkibbereenClonakilty	SW_090_0200	Yes
Union Hall Sewerage Schem	Cork West	2	Investigate the need for increase in capacity of treatment plant.	2015+	SkibbereenClonakilty	SW_110_0300	Yes
Buncrana WWTP	Donegal	2	Investigate the need for increase in capacity of treatment plant.	2010	Crana	NW_220_0000	No
Downings WWTP	Donegal	2	Investigate the need for increase in capacity of treatment plant.	2015	MulroyBay/Sheephaven	NW_190_0000	Yes
Dunkineely WWTP	Donegal	2	Investigate the need for increase in capacity of treatment plant.	2015	DonegalBay	NW_060_0000	Yes
Rathmullan no. 1 WWTP	Donegal	2	Investigate the need for increase in capacity of treatment plant.	2010	LoughSwillyWest	NW_220_0100	No
Coliemore Outfall	Dun Laoghaire/Rath	2	Investigate the need for increase in capacity of treatment plant.	2012	Shanganagh	EA_090_0000	No
Ballyboghil	Fingal	2	Investigate the need for tertiary treatment or for the relocation of the outfall.	2012	Ballyboghil	EA_08_822	No
Lusk WWTP	Fingal	2	Investigate the need for increase in capacity of treatment plant.	2012	Lusk	EA_050_0100	No

Table 2 - Agglomerations requiring further investigation prior to Capital Works

Point Source Discharge	County	Priority	Measure (Investigation before Capital Works)	LA Proposed Date for Completion	WMU	WB Code	Extended Deadline
Oldtown, Dublin	Fingal	2	Investigate the need for tertiary treatment or for the relocation of the outfall.	2012	Ballyboghil	EA_08_822	No
Rush Outfall	Fingal	2	Investigate the need for increase in capacity of treatment plant.	2012	Lusk	EA_020_0000	No
Skerries WWTP	Fingal	2	Investigate the need for increase in capacity of treatment plant.	2012	Lusk	EA_020_0000	No
Mutton Island	Galway City	2	Investigate the need for increase in capacity of treatment plant.	2012	GalwayCoast	WE_170_0700	No
An Cheathrú Rua	Galway County	3	Investigate the need for increase in capacity of treatment plant.	2015	WestGalway	WE_190_0000	Yes
Ballymoe	Galway County	2	Investigate the need for increase in capacity of treatment plant.	2015	Suck	SH_26_1276	Yes
Clifden WWTP	Galway County	2	Investigate the need for increase in capacity of treatment plant.	2012	WestGalway	WE_270_0100	No
Kinvara	Galway County	2	Investigate the need for increase in capacity of treatment plant.	2012	Kinvara	WE_160_0100	No
Moylough	Galway County	2	Investigate the need for tertiary treatment or for the relocation of the outfall.	2021	Suck	SH_26_2889	Yes
Newbridge	Galway County	3	Investigate the need for increase in capacity of treatment plant.	2021	Suck	SH_26_3093	Yes
Roundstone	Galway County	2	Investigate the need for increase in capacity of treatment plant.	2021	WestGalway	WE_230_0100	Yes
An Spidéal	Galway County	2	Investigate the need for increase in capacity of treatment plant.	2012	GalwayCoast	WE_010_0000	No
Woodford	Galway County	2	Investigate the need for increase in capacity of treatment plant.	2021	LoughDerg	SH_25_3538	Yes
Woodford	Galway County	2	Investigate the need for tertiary treatment or for the relocation of the outfall.	2021	LoughDerg	SH_25_3538	Yes

Table 2 - Agglomerations requiring further investigation prior to Capital Works

Point Source Discharge	County	Priority	Measure (Investigation before Capital Works)	LA Proposed Date for Completion	WMU	WB Code	Extended Deadline
Ballyduff Imhoff Tank	Kerry	2	Investigate the need for increase in capacity of treatment plant.	2012	Feale	SH_060_0100	No
Ballyferriter Imhoff Tank	Kerry	3	Investigate the need for increase in capacity of treatment plant.	2015	NorthKerry/TraleeBay	SH_020_0000	Yes
Caherdaniel	Kerry	2	Investigate the need for increase in capacity of treatment plant.	2012	SneemCummeraghInny	SW_150_0000	No
Castlegregory	Kerry	2	Investigate the need for increase in capacity of treatment plant.	2012	NorthKerry/TraleeBay	SH_040_0000	No
Castlemaine	Kerry	2	Investigate the need for increase in capacity of treatment plant.	2012	NorthDingleBay	SW_230_0200	No
Causeway	Kerry	3	Investigate the need for increase in capacity of treatment plant.	2015	Feale	SH_23_829	Yes
Duagh	Kerry	3	Investigate the need for increase in capacity of treatment plant.	2015	Feale	SH_23_2130	Yes
Dundegan/Ballinskelligs	Kerry	3	Investigate the need for increase in capacity of treatment plant.	2015	SneemCummeraghInny	SW_200_0000	Yes
Fenit Septic Tank	Kerry	2	Investigate the need for increase in capacity of treatment plant.	2012	NorthKerry/TraleeBay	SH_040_0000	No
Feohanagh	Kerry	3	Investigate the need for increase in capacity of treatment plant.	2015	Deel/ShannonEstuary	SH_24_200	Yes
Kilcummin	Kerry	3	Investigate the need for increase in capacity of treatment plant.	2015	NorthKerry/TraleeBay	SH_030_0000	Yes
Kilgarvan	Kerry	2	Investigate the need for increase in capacity of treatment plant.	2012	RoughlyFinnihy	SW_21_8075	No
Killarney WWTP	Kerry	2	Investigate the need for tertiary treatment or for the relocation of the outfall.	2015+	Laune	SW_22_3944	Yes
Knockagoshel	Kerry	2	Investigate the need for increase in capacity of treatment plant.	2012	Feale	SH_23_131	No
Milltown, Kerry	Kerry	2	Investigate the need for increase in capacity of treatment plant.	2012	NorthDingleBay	SW_230_0200	No

Table 2 - Agglomerations requiring further investigation prior to Capital Works

Point Source Discharge	County	Priority	Measure (Investigation before Capital Works)	LA Proposed Date for Completion	WMU	WB Code	Extended Deadline
Murreagh	Kerry	3	Investigate the need for increase in capacity of treatment plant.	2015	SneemCummeraghInny	SW_200_0000	Yes
Portmagee	Kerry	2	Investigate the need for increase in capacity of treatment plant.	2012	SouthDingleBay	SW_210_0000	No
Rossbeigh	Kerry	2	Investigate the need for increase in capacity of treatment plant.	2012	SouthDingleBay	SW_230_0100	No
Tarbert Septic Tanks	Kerry	2	Investigate the need for increase in capacity of treatment plant.	2012	Deel/ShannonEstuary	SH_060_0300	No
Ventry	Kerry	2	Investigate the need for increase in capacity of treatment plant.	2012	NorthDingleBay	SW_230_0000	No
Waterville Septic Tank	Kerry	3	Investigate the need for increase in capacity of treatment plant.	2015	SneemCummeraghInny	SW_200_0000	Yes
Brosna	Kerry	2	Investigate the need for increase in capacity of treatment plant.	2012	Feale	SH_23_1769	No
Brosna	Kerry	2	Investigate the need for tertiary treatment or for the relocation of the outfall.	2012	Feale	SH_23_1769	No
Athy WWTP	Kildare	2	Investigate the need for increase in capacity of treatment plant.	2012	BarrowMain	SE_14_196_3	No
Ballymore Eustace WWTP	Kildare	2	Investigate the need for increase in capacity of treatment plant.	2012	Liffey	EA_09_1870_1	No
Castledermot WWTP	Kildare	2	Investigate the need for tertiary treatment or for the relocation of the outfall.	2012	GreeseLerr	SE_14_157	No
Dunore	Kildare	3	Investigate the need for increase in capacity of treatment plant.	2015	Liffey	EA_09_1211	Yes
Kilberry, Kildare	Kildare	2	Investigate the need for increase in capacity of treatment plant.	2012	BarrowMain	SE_14_572	No
Kildare Town WWTP	Kildare	2	Investigate the need for increase in capacity of treatment plant.	2012	BarrowMain	SE_14_842	No

Table 2 - Agglomerations requiring further investigation prior to Capital Works

Point Source Discharge	County	Priority	Measure (Investigation before Capital Works)	LA Proposed Date for Completion	WMU	WB Code	Extended Deadline
Ballyraggett Sewerage Scheme	Kilkenny	2	Investigate the need for tertiary treatment or for the relocation of the outfall.	2012	NoreMain	SE_15_1994_2	No
Fiddown	Kilkenny	2	Investigate the need for increase in capacity of treatment plant.	2012	SuirEstuary	SE_100_0500	No
Goresbridge	Kilkenny	2	Investigate the need for increase in capacity of treatment plant.	2012	BarrowMain	SE_14_196_6	No
Inistioge	Kilkenny	2	Investigate the need for increase in capacity of treatment plant.	2012	NoreEstuary	SE_100_0400	No
Kilmaganny WWTP	Kilkenny	3	Investigate the need for increase in capacity of treatment plant.	2015	Kings	SE_15_364	Yes
Mullinavat	Kilkenny	3	Investigate the need for increase in capacity of treatment plant.	2015	SuirEstuary	SE_16_966	Yes
Mullinavat	Kilkenny	3	Investigate the need for tertiary treatment or for the relocation of the outfall.	2015	SuirEstuary	SE_16_966	Yes
Piltown Sewerage Scheme	Kilkenny	2	Investigate the need for increase in capacity of treatment plant.	2012	SuirEstuary	SE_16_4215	No
Thomastown Sewerage Scheme	Kilkenny	2	Investigate the need for increase in capacity of treatment plant.	2012	NoreMain	SE_15_1994_7	No
Ballylinan WWTP	Laois	2	Investigate the need for tertiary treatment or for the relocation of the outfall.	2012	BarrowMain	SE_14_196_3	No
Newtown-Doonane	Laois	3	Investigate the need for tertiary treatment or for the relocation of the outfall.	2015	DInin	SE_15_738	Yes
Portlaoise WWTP	Laois	2	Investigate the need for tertiary treatment or for the relocation of the outfall.	2012	Barrow/Owenass/Triogue	SE_14_1016	No
Ballinamore WWTP	Leitrim	3	Investigate the need for increase in capacity of treatment plant.	2015	ErneMid	NW_36_2082	Yes

Table 2 - Agglomerations requiring further investigation prior to Capital Works

Point Source Discharge	County	Priority	Measure (Investigation before Capital Works)	LA Proposed Date for Completion	WMU	WB Code	Extended Deadline
Carrigallen WWTP	Leitrim	3	Investigate the need for increase in capacity of treatment plant.	2015	ErneEast	NW_36_2032	Yes
Carrigallen WWTP	Leitrim	3	Investigate the need for tertiary treatment or for the relocation of the outfall.	2015	ErneEast	NW_36_2032	Yes
Carrigallen WWTP	Leitrim	3	Investigate the need for tertiary treatment or for the relocation of the outfall.	2015	ErneEast	NW_36_2032	Yes
Leitrim Village WWTP	Leitrim	3	Investigate the need for increase in capacity of treatment plant.	2015	UpperShannon	SH_26_3490	Yes
Doon	Limerick County	3	Investigate the need for tertiary treatment or for the relocation of the outfall.	2015	Mulkear	SH_25_2001	Yes
Doon	Limerick County	3	Investigate the need for tertiary treatment or for the relocation of the outfall.	2015	Mulkear	SH_25_2001	Yes
Foynes	Limerick County	2	Investigate the need for increase in capacity of treatment plant.	2015	Deel/ShannonEstuary	SH_060_0300	Yes
Glin	Limerick County	2	Investigate the need for increase in capacity of treatment plant.	2015	Deel/ShannonEstuary	SH_060_0300	Yes
Kilfinnane	Limerick County	3	Investigate the need for tertiary treatment or for the relocation of the outfall.	2015	Maigue	SH_24_738	Yes
Kilfinnane	Limerick County	3	Investigate the need for tertiary treatment or for the relocation of the outfall.	2015	Maigue	SH_24_738	Yes
Newcastle West WWTP	Limerick County	3	Investigate the need for tertiary treatment or for the relocation of the outfall.	2015	Deel/ShannonEstuary	SH_24_869	Yes

Table 2 - Agglomerations requiring further investigation prior to Capital Works

Point Source Discharge	County	Priority	Measure (Investigation before Capital Works)	LA Proposed Date for Completion	WMU	WB Code	Extended Deadline
Newcastle West WWTP	Limerick County	3	Investigate the need for tertiary treatment or for the relocation of the outfall.	2015	Deel/ShannonEstuary	SH_24_869	Yes
Patrickswell WWTP	Limerick County	3	Investigate the need for tertiary treatment or for the relocation of the outfall.	2012	Maigue	SH_24_1704	No
Patrickswell WWTP	Limerick County	3	Investigate the need for tertiary treatment or for the relocation of the outfall.	2012	Maigue	SH_24_1704	No
Granard WWTP	Longford	3	Investigate the need for tertiary treatment or for the relocation of the outfall.	2015	Camlin/Rinn	SH_26_1082	Yes
Keenagh WWTP	Longford	2	Investigate the need for tertiary treatment or for the relocation of the outfall.	2012	Camlin/Rinn	SH_26_2726	No
Keenagh WWTP	Longford	2	Investigate the need for tertiary treatment or for the relocation of the outfall.	2012	Camlin/Rinn	SH_26_2726	No
Greenore	Louth	2	Investigate the need for treatment plant.	2012	Carlingford	#N/A	No
Omeath	Louth	2	Investigate the need for treatment plant.	2012	Carlingford	#N/A	No
Belmullet	Mayo	2	Investigate the need for increase in capacity of treatment plant.	2012	MayoWest	WE_405_0000	No
Claremorris WWTP	Mayo	2	Investigate the need for tertiary treatment or for the relocation of the outfall.	2012	Mask	WE_30_3370_2	No
Killala	Mayo	2	Investigate the need for increase in capacity of treatment plant.	2012	Conn	WE_420_0000	No

Table 2 - Agglomerations requiring further investigation prior to Capital Works

Point Source Discharge	County	Priority	Measure (Investigation before Capital Works)	LA Proposed Date for Completion	WMU	WB Code	Extended Deadline
Lahardaun	Mayo	2	Investigate the need for tertiary treatment or for the relocation of the outfall.	2012	Conn	WE_34_440	No
Mallaranny WWTP	Mayo	2	Investigate the need for tertiary treatment or for the relocation of the outfall.	2012	ClewBay	WE_32_2891	No
Swinford WWTP	Mayo	2	Investigate the need for tertiary treatment or for the relocation of the outfall.	2012	Moy	WE_34_2499	No
Ballivor WWTP	Meath	3	Investigate the need for tertiary treatment or for the relocation of the outfall.	2012	BoyneLower	EA_07_340	No
Donore WWTP	Meath	2	Investigate the need for increase in capacity of treatment plant.	2012	BoyneLower	EA_07_1894_3	No
Dunshaughlin WWTP	Meath	3	Investigate the need for tertiary treatment or for the relocation of the outfall.	2012	BoyneLower	EA_07_899	No
Enfield	Meath	3	Investigate the need for tertiary treatment or for the relocation of the outfall.	2015	BlackwaterSouth	EA_07_954	Yes
Kentstown	Meath	3	Investigate the need for tertiary treatment or for the relocation of the outfall.	2015	Nanny	EA_08_298	Yes
Rathmolyon WWTP	Meath	3	Investigate the need for tertiary treatment or for the relocation of the outfall.	2012	BoyneLower	EA_07_1673	No
Stamullen WWTP	Meath	3	Investigate the need for tertiary treatment or for the relocation of the outfall.	2015	Delvin	EA_08_138	Yes

Table 2 - Agglomerations requiring further investigation prior to Capital Works

Point Source Discharge	County	Priority	Measure (Investigation before Capital Works)	LA Proposed Date for Completion	WMU	WB Code	Extended Deadline
Clones WWTP	Monaghan	2	Investigate the need for tertiary treatment or for the relocation of the outfall.	2015+	ErneEast	XB_36_east_3	Yes
Monaghan WWTP	Monaghan	3	Investigate the need for tertiary treatment or for the relocation of the outfall.	2015+	Blackwater	NB_03_479	Yes
Threemilehouse	Monaghan	3	Investigate the need for increase in capacity of treatment plant.	2015	Blackwater	NB_03_36	Yes
Holycross WWTP	North Tipp	2	Investigate the need for increase in capacity of treatment plant.	2012	SuirUpper	SE_16_3993	No
Littleton WWTP	North Tipp	3	Investigate the need for tertiary treatment or for the relocation of the outfall.	2015	Drish	SE_16_2745	Yes
Puckane	North Tipp	3	Investigate the need for tertiary treatment or for the relocation of the outfall.	2015	LoughDerg	SH_25_2242	Yes
Rear Cross	North Tipp	3	Investigate the need for tertiary treatment or for the relocation of the outfall.	2015	Mulkear	SH_25_1924	Yes
Toomevara	North Tipp	3	Investigate the need for tertiary treatment or for the relocation of the outfall.	2015	Nenagh	SH_25_402	Yes
Two-Mile Borris	North Tipp	3	Investigate the need for tertiary treatment or for the relocation of the outfall.	2015	Drish	SE_16_4109	Yes
Ballycumber WWTP	Offaly	2	Investigate the need for increase in capacity of treatment plant.	2012	Brosna	SH_25_2987	No
Belmount WWTP	Offaly	2	Investigate the need for increase in capacity of treatment plant.	2012	Brosna	SH_25_681	No

Table 2 - Agglomerations requiring further investigation prior to Capital Works

Point Source Discharge	County	Priority	Measure (Investigation before Capital Works)	LA Proposed Date for Completion	WMU	WB Code	Extended Deadline
Cloghan WWTP	Offaly	3	Investigate the need for tertiary treatment or for the relocation of the outfall.	2015	Brosna	SH_25_3014	Yes
Shannonbridge WWTP	Offaly	2	Investigate the need for increase in capacity of treatment plant.	2012	Hind/LoughRee	SH_26_1448_3	No
Shinrone WWTP	Offaly	3	Investigate the need for tertiary treatment or for the relocation of the outfall.	2012	Brosna	SH_25_877	No
Walsh Island WWTP	Offaly	3	Investigate the need for increase in capacity of treatment plant.	2015	Figile	SE_14_1939	Yes
Ballaghaderreen WWTP	Roscommon	3	Investigate the need for tertiary treatment or for the relocation of the outfall.	2015	UpperShannon	SH_26_1122_1	Yes
Hodson Bay WWTP	Roscommon	3	Investigate the need for increase in capacity of treatment plant.	2012	Hind/LoughRee	SH_26_750a	No
Knockcroghery WWTP	Roscommon	3	Investigate the need for increase in capacity of treatment plant.	2012	Hind/LoughRee	SH_26_750a	No
Ballinacarrow WWTP	Sligo	3	Investigate the need for increase in capacity of treatment plant.	2012	Ballysadare	#N/A	No
Ballinacarrow WWTP	Sligo	3	Investigate the need for tertiary treatment or for the relocation of the outfall.	2012	Ballysadare	#N/A	No
Cliffoney WWTP	Sligo	2	Investigate the need for increase in capacity of treatment plant.	2012	Garravogue	WE_430_0000	No
Mullaghmore WWTP	Sligo	2	Investigate the need for increase in capacity of treatment plant.	2012	LoughMelvin	NW_010_0000	No
Rosses Point WWTP	Sligo	2	Investigate the need for increase in capacity of treatment plant.	2012	Garravogue	WE_470_0000	No
Ballylooby	South Tipp	2	Investigate the need for increase in capacity of treatment plant.	2012	SuirMain	SE_16_3786	No

Table 2 - Agglomerations requiring further investigation prior to Capital Works

Point Source Discharge	County	Priority	Measure (Investigation before Capital Works)	LA Proposed Date for Completion	WMU	WB Code	Extended Deadline
Burncourt WWTP	South Tipp	2	Investigate the need for increase in capacity of treatment plant.	2012	Tar	SE_16_565	No
Carrick-on-Suir	South Tipp	3	Investigate the need for tertiary treatment or for the relocation of the outfall.	2015	SuirEstuary	SE_16_4191	Yes
Commons WWTP	South Tipp	3	Investigate the need for tertiary treatment or for the relocation of the outfall.	2015	Kings	SE_15_1736	Yes
Dundrum WWTP	South Tipp	2	Investigate the need for increase in capacity of treatment plant.	2012	Multeen	SE_16_3825	No
Grange	South Tipp	3	Investigate the need for increase in capacity of treatment plant.	2015	SuirMain	SE_16_3076	Yes
Killenaule WWTP	South Tipp	3	Investigate the need for tertiary treatment or for the relocation of the outfall.	2015	Anner	SE_16_2360	Yes
Lisvernane	South Tipp	2	Investigate the need for increase in capacity of treatment plant.	2012	Aherlow	SE_16_1178	No
Redmonstown WWTP	South Tipp	2	Investigate the need for increase in capacity of treatment plant.	2012	Anner	SE_16_4044	No
Tipperary WWTP	South Tipp	3	Investigate the need for tertiary treatment or for the relocation of the outfall.	2015	Aherlow	SE_16_1127	Yes
Dunmore East WWTP	Waterford County	2	Investigate the need for increase in capacity of treatment plant.	2012	ColliganMahon	SE_100_0000	No
Tallow WWTP	Waterford County	2	Investigate the need for increase in capacity of treatment plant.	2012	BlackwaterBride	SW_18_2778	No
Ballymore	Westmeath	3	Investigate the need for tertiary treatment or for the relocation of the outfall.	2015	Inny	SH_26_3719	Yes
Killbeggan WWTP	Westmeath	2	Investigate the need for increase in capacity of treatment plant.	2010	Brosna	SH_25_566_2	No

Table 2 - Agglomerations requiring further investigation prior to Capital Works

Point Source Discharge	County	Priority	Measure (Investigation before Capital Works)	LA Proposed Date for Completion	WMU	WB Code	Extended Deadline
Kinnegad WWTP	Westmeath	2	Investigate the need for tertiary treatment or for the relocation of the outfall.	2010	BoyneUpper	EA_07_234	No
Mullingar WWTP	Westmeath	2	Investigate the need for tertiary treatment or for the relocation of the outfall.	2015	Inny	SH_25_2938	Yes
Tyrellspass WWTP	Westmeath	3	Investigate the need for tertiary treatment or for the relocation of the outfall.	2011	Brosna	SH_25_3789	No
Ballycullane	Wexford	3	Investigate the need for increase in capacity of treatment plant.	2015	BallyteigueBannow	SE_13_754	Yes
Blackwater WWTP	Wexford	3	Investigate the need for tertiary treatment or for the relocation of the outfall.	2015	Owenavorragh	SE_11_32	Yes
Campile	Wexford	2	Investigate the need for increase in capacity of treatment plant.	2012	BarrowEstuary	SE_100_0100	No
Clongeen	Wexford	2	Investigate the need for increase in capacity of treatment plant.	2012	BallyteigueBannow	SE_090_0100	No
Davidstown	Wexford	3	Investigate the need for increase in capacity of treatment plant.	2015	BoroUrrin	SE_12_2601	Yes
Duncormick	Wexford	2	Investigate the need for increase in capacity of treatment plant.	2012	BallyteigueBannow	SE_080_0100	No
Fetherd-on-Sea WWTP	Wexford	3	Investigate the need for increase in capacity of treatment plant.	2012	BallyteigueBannow	SE_050_0000	No
Kilmore Quay	Wexford	2	Investigate the need for increase in capacity of treatment plant.	2012	BallyteigueBannow	SE_050_0000	No
Kiltealy	Wexford	3	Investigate the need for increase in capacity of treatment plant.	2015	BoroUrrin	SE_12_2117	Yes
Murrintown - JP Park	Wexford	3	Investigate the need for increase in capacity of treatment plant.	2015	SlaneyEstuary	SE_12_316	Yes

Table 2 - Agglomerations requiring further investigation prior to Capital Works

Point Source Discharge	County	Priority	Measure (Investigation before Capital Works)	LA Proposed Date for Completion	WMU	WB Code	Extended Deadline
Oilgate	Wexford	2	Investigate the need for increase in capacity of treatment plant.	2012	SlaneyEstuary	#N/A	No
Oulart	Wexford	3	Investigate the need for increase in capacity of treatment plant.	2015	Owenavorragh	SE_11_56	Yes
Tomhaggard(St. Annes)	Wexford	2	Investigate the need for increase in capacity of treatment plant.	2012	BallyteigueBannow	SE_13_259	No
Arklow	Wicklow	3	Investigate the need for increase in capacity of treatment plant.	2021	Kilmurry	EA_150_0100	Yes
Aughrim WWTP	Wicklow	3	Investigate the need for increase in capacity of treatment plant.	2015	Avoca	EA_10_1339	Yes
Avoca	Wicklow	2	Investigate the need for increase in capacity of treatment plant.	2021	Avoca	EA_10_1477	Yes
Enniskerry WWTP	Wicklow	2	Investigate the need for tertiary treatment or for the relocation of the outfall.	2015	Dargle	EA_10_1277	Yes
Kilcoole WWTP	Wicklow	2	Investigate the need for tertiary treatment or for the relocation of the outfall.	2015	Newcastle	EA_120_0100	Yes
Kilpedder WWTP	Wicklow	2	Investigate the need for tertiary treatment or for the relocation of the outfall.	2012	Newcastle	EA_120_0100	No
Tinahely WWTP	Wicklow	2	Investigate the need for tertiary treatment or for the relocation of the outfall.	2012	Derry	SE_12_1442	No

Appendix C
Plants Required to Commence Implementation
of Pollution Reduction Programmes for
Shellfish Waters

Table 3 - Plants Required to Commence Implementation of Pollution Reduction Programmes for Shellfish Waters

Point Source Discharge	County	Priority	Measure	LA Proposed Date for Completion	WMU	WB Code	Extended Deadline
Carrigrenan	Cork City	1	Commence implementation of the Pollution Reduction Programme for Shellfish waters	2010	LowerLee/Owenboy	SW_060_0700	No
Kinsale	Cork South	1	Commence implementation of the Pollution Reduction Programme for Shellfish waters	2010	Bandon/Stick	SW_080_0100	No
Cobh	Cork South	1	Commence implementation of the Pollution Reduction Programme for Shellfish waters	2010	LowerLee/Owenboy	SW_060_0700	No
Passage/Monkstown	Cork South	1	Commence implementation of the Pollution Reduction Programme for Shellfish waters	2010	LowerLee/Owenboy	SW_060_0700	No
Ringaskiddy Carrigaline Crosshaven	Cork South	1	Commence implementation of the Pollution Reduction Programme for Shellfish	2010	LowerLee/Owenboy	SW_060_0000	No
Carrigtwohill WWTP	Cork South	1	Commence implementation of the Pollution Reduction Programme for Shellfish waters	2010	Owennacurra	SW_060_0700	No
Midleton WWTP	Cork South	1	Commence implementation of the Pollution Reduction Programme for Shellfish waters	2010	Owennacurra	SW_060_0300	No
Saleen	Cork South	1	Commence implementation of the Pollution Reduction Programme for Shellfish waters	2010	Womanagh	SW_060_0000	No
Whitegate/Aghada	Cork South	1	Commence implementation of the Pollution Reduction Programme for Shellfish waters	2010	Womanagh	SW_060_0000	No

Table 3 - Plants Required to Commence Implementation of Pollution Reduction Programmes for Shellfish Waters

Point Source Discharge	County	Priority	Measure	LA Proposed Date for Completion	WMU	WB Code	Extended Deadline
Bantry Sewerage Scheme	Cork West	1	Commence implementation of the Pollution Reduction Programme for Shellfish waters	2010	BantryBaySouth-DunmanusBay	SW_170_0100	No
Durrus	Cork West	1	Commence implementation of the Pollution Reduction Programme for Shellfish waters	2010	BantryBaySouth-DunmanusBay	SW_21_7736	No
Castletownbere Sewerage Scheme	Cork West	1	Commence implementation of the Pollution Reduction Programme for Shellfish waters	2010	BearaPenninsula	SW_180_0000	No
Baltimore WWTP	Cork West	1	Commence implementation of the Pollution Reduction Programme for Shellfish waters	2010	SkibbereenClonakilty	SW_130_0100	No
Buncrana WWTP	Donegal	1	Commence implementation of the Pollution Reduction Programme for Shellfish waters	2010	Crana	NW_220_0000	No
Fahan	Donegal	1	Commence implementation of the Pollution Reduction Programme for Shellfish waters	2010	Crana	NW_220_0100	No
Donegal Town no.1 WWTP	Donegal	1	Commence implementation of the Pollution Reduction Programme for Shellfish waters	2010	DonegalBay	NW_050_0100	No
Kilmacrennan WWTP	Donegal	1	Commence implementation of the Pollution Reduction Programme for Shellfish waters	2010	Lennan/Clady/Owencarrow/Glaskeelan	NW_39_388	No

Table 3 - Plants Required to Commence Implementation of Pollution Reduction Programmes for Shellfish Waters

Point Source Discharge	County	Priority	Measure	LA Proposed Date for Completion	WMU	WB Code	Extended Deadline
Milford, Donegal	Donegal	1	Commence implementation of the Pollution Reduction Programme for Shellfish waters	2010	Lennan/Clady/Owencarrow/Glaskeelan	NW_39_1600	No
Ramelton WWTP	Donegal	1	Commence implementation of the Pollution Reduction Programme for Shellfish waters	2010	Lennan/Clady/Owencarrow/Glaskeelan	NW_220_0100	No
Rathmullan no. 1 WWTP	Donegal	1	Commence implementation of the Pollution Reduction Programme for Shellfish waters	2010	LoughSwillyWest	NW_220_0100	No
Carrigart WWTP	Donegal	1	Commence implementation of the Pollution Reduction Programme for Shellfish waters	2010	MulroyBay/Sheephaven	NW_200_0000	No
Kerrykeel	Donegal	1	Commence implementation of the Pollution Reduction Programme for Shellfish waters	2010	MulroyBay/Sheephaven	NW_38_2210	No
Letterkenny WWTP	Donegal	1	Commence implementation of the Pollution Reduction Programme for Shellfish waters	2010	Swilly	NW_220_0100	No
Manorcunningham WWTP	Donegal	1	Commence implementation of the Pollution Reduction Programme for Shellfish waters	2010	Swilly	NW_220_0100	No
Newtowncunningham WWTP	Donegal	1	Commence implementation of the Pollution Reduction Programme for Shellfish waters	2010	Swilly	NW_39_2252	No

Table 3 - Plants Required to Commence Implementation of Pollution Reduction Programmes for Shellfish Waters

Point Source Discharge	County	Priority	Measure	LA Proposed Date for Completion	WMU	WB Code	Extended Deadline
Portrane WWTP	Fingal	1	Commence implementation of the Pollution Reduction Programme for Shellfish waters	2010	Donabate	EA_020_0000	No
Swords, Dublin	Fingal	1	Commence implementation of the Pollution Reduction Programme for Shellfish waters	2010	Donabate	EA_060_0100	No
Balbriggan Outfall	Fingal	1	Commence implementation of the Pollution Reduction Programme for Shellfish waters	2010	Lusk	EA_020_0000	No
Kinvara	Galway County	1	Commence implementation of the Pollution Reduction Programme for Shellfish waters	2010	Kinvara	WE_160_0100	No
Clifden WWTP	Galway County	1	Commence implementation of the Pollution Reduction Programme for Shellfish waters	2010	WestGalway	WE_270_0100	No
Glenbeigh Imhoff Tank	Kerry	1	Commence implementation of the Pollution Reduction Programme for Shellfish waters	2010	SouthDingleBay	SW_22_3936	No
Killorglin WWTP	Kerry	1	Commence implementation of the Pollution Reduction Programme for Shellfish waters	2010	Laune	SW_230_0200	No
Castlemaine	Kerry	1	Commence implementation of the Pollution Reduction Programme for Shellfish waters	2010	NorthDingleBay	SW_230_0200	No

Table 3 - Plants Required to Commence Implementation of Pollution Reduction Programmes for Shellfish Waters

Point Source Discharge	County	Priority	Measure	LA Proposed Date for Completion	WMU	WB Code	Extended Deadline
Milltown, Kerry	Kerry	1	Commence implementation of the Pollution Reduction Programme for Shellfish waters	2010	NorthDingleBay	SW_230_0200	No
Fenit Septic Tank	Kerry	1	Commence implementation of the Pollution Reduction Programme for Shellfish waters	2010	NorthKerry/TraleeBay	SH_040_0000	No
Kilfenora	Kerry	1	Commence implementation of the Pollution Reduction Programme for Shellfish waters	2010	NorthKerry/TraleeBay	SH_050_0000	No
Tralee WWTP	Kerry	1	Commence implementation of the Pollution Reduction Programme for Shellfish waters	2010	NorthKerry/TraleeBay	SH_050_0000	No
Cahersiveen WWTP	Kerry	1	Commence implementation of the Pollution Reduction Programme for Shellfish waters	2010	SouthDingleBay	SW_220_0100	No
Knightstown	Kerry	1	Commence implementation of the Pollution Reduction Programme for Shellfish waters	2010	SouthDingleBay	SW_220_0000	No
Portmagee	Kerry	1	Commence implementation of the Pollution Reduction Programme for Shellfish waters	2010	SouthDingleBay	SW_210_0000	No
Rossbeigh	Kerry	1	Commence implementation of the Pollution Reduction Programme for Shellfish waters	2010	SouthDingleBay	SW_230_0100	No

Table 3 - Plants Required to Commence Implementation of Pollution Reduction Programmes for Shellfish Waters

Point Source Discharge	County	Priority	Measure	LA Proposed Date for Completion	WMU	WB Code	Extended Deadline
Kildare Town WWTP	Kildare	1	Commence implementation of the Pollution Reduction Programme for Shellfish waters	2010	BarrowMain	SE_14_842	No
Carlingford WWTP	Louth	1	Commence implementation of the Pollution Reduction Programme for Shellfish waters	2010	Carlingford	NB_030_0000	No
Greenore	Louth	1	Commence implementation of the Pollution Reduction Programme for Shellfish waters	2010	Carlingford	#N/A	No
Omeath	Louth	1	Commence implementation of the Pollution Reduction Programme for Shellfish waters	2010	Carlingford	#N/A	No
Annagassan	Louth	1	Commence implementation of the Pollution Reduction Programme for Shellfish waters	2010	Dee	#N/A	No
Blackrock WWTP	Louth	1	Commence implementation of the Pollution Reduction Programme for Shellfish waters	2010	Fane	NB_040_0400	No
Dundalk WWTP	Louth	1	Commence implementation of the Pollution Reduction Programme for Shellfish waters	2010	Fane	NB_040_0200	No
Carney WWTP	Sligo	1	Commence implementation of the Pollution Reduction Programme for Shellfish waters	2010	Garravogue	WE_35_1143	No

Table 3 - Plants Required to Commence Implementation of Pollution Reduction Programmes for Shellfish Waters

Point Source Discharge	County	Priority	Measure	LA Proposed Date for Completion	WMU	WB Code	Extended Deadline
Rosses Point WWTP	Sligo	1	Commence implementation of the Pollution Reduction Programme for Shellfish waters	2010	Garravogue	WE_470_0000	No
Sligo	Sligo	1	Commence implementation of the Pollution Reduction Programme for Shellfish waters	2010	Garravogue	WE_470_0000	No
Strandhill WWTP	Sligo	1	Commence implementation of the Pollution Reduction Programme for Shellfish waters	2010	Garravogue	WE_450_0000	No
Waterford WWTP	Waterford City	1	Commence implementation of the Pollution Reduction Programme for Shellfish waters	2010	SuirEstuary	SE_100_0500	No
Ballinroad WWTP	Waterford County	1	Commence implementation of the Pollution Reduction Programme for Shellfish waters	2010	ColliganMahon	SE_140_0100	No
Crooke WWTP	Waterford County	1	Commence implementation of the Pollution Reduction Programme for Shellfish waters	2010	ColliganMahon	SE_100_0100	No
Dungarvan UDC WWTP	Waterford County	1	Commence implementation of the Pollution Reduction Programme for Shellfish waters	2010	ColliganMahon	SE_140_0100	No
Dunmore East WWTP	Waterford County	1	Commence implementation of the Pollution Reduction Programme for Shellfish waters	2010	ColliganMahon	SE_100_0000	No

Table 3 - Plants Required to Commence Implementation of Pollution Reduction Programmes for Shellfish Waters

Point Source Discharge	County	Priority	Measure	LA Proposed Date for Completion	WMU	WB Code	Extended Deadline
Passage East WWTP	Waterford County	1	Commence implementation of the Pollution Reduction Programme for Shellfish waters	2010	ColliganMahon	SE_100_0100	No
Ring/Helvick/Ballinagoul WWTP	Waterford County	1	Commence implementation of the Pollution Reduction Programme for Shellfish waters	2010	ColliganMahon	SE_140_0000	No
Cheekpoint WWTP	Waterford County	1	Commence implementation of the Pollution Reduction Programme for Shellfish waters	2010	SuirEstuary	SE_100_0100	No
Arthurstown	Wexford	1	Commence implementation of the Pollution Reduction Programme for Shellfish waters	2010	BallyteigueBannow	SE_100_0100	No
Ballyhack	Wexford	1	Commence implementation of the Pollution Reduction Programme for Shellfish waters	2010	BallyteigueBannow	SE_100_0100	No
Duncannon	Wexford	1	Commence implementation of the Pollution Reduction Programme for Shellfish waters	2010	BallyteigueBannow	SE_100_0100	No
Wellingtonbridge	Wexford	1	Commence implementation of the Pollution Reduction Programme for Shellfish waters	2010	BallyteigueBannow	SE_090_0100	No
Campile	Wexford	1	Commence implementation of the Pollution Reduction Programme for Shellfish waters	2010	BarrowEstuary	SE_100_0100	No

Table 3 - Plants Required to Commence Implementation of Pollution Reduction Programmes for Shellfish Waters

Point Source Discharge	County	Priority	Measure	LA Proposed Date for Completion	WMU	WB Code	Extended Deadline
Castlebridge WWTP	Wexford	1	Commence implementation of the Pollution Reduction Programme for Shellfish waters	2010	SlaneyEstuary	SE_12_3	No
Wexford	Wexford	1	Commence implementation of the Pollution Reduction Programme for Shellfish waters	2010	SlaneyEstuary	SE_12_2456	No

Appendix D
Plants requiring the Implementation of an
Appropriate Performance Management System

Table 4 - Plants requiring the Implementation of an Appropriate Performance Management System

Point Source Discharge	County	Priority	Measure	LA Proposed Date for Completion	WMU	WB Code	Extended Deadline
Borris WWTP	Carlow	1	Implement an appropriate performance management system	2012	BarrowLower	SE_14_937	No
Palatine	Carlow	1	Implement an appropriate performance management system	2012	GreeseLerr	SE_14_429	No
Arvagh WWTP	Cavan	1	Implement an appropriate performance management system	2012	ErneEast	NW_36_477	No
Killeshandra WWTP	Cavan	1	Implement an appropriate performance management system	2012	ErneEast	NW_36_188	No
Ballyjamesduff WWTP	Cavan	1	Implement an appropriate performance management system	2012	Inny	SH_26_2264	No
Ballinagh WWTP	Cavan	1	Implement an appropriate performance management system	2012	Woodford	NW_36_2100	No
Cootehill WWTP	Cavan	1	Implement an appropriate performance management system	2012	Woodford	NW_36_237	No
Crusheen WWTP	Clare	1	Implement an appropriate performance management system	2012	Fergus	SH_27_666	No
Newmarket-on-Fergus WWTP	Clare	1	Implement an appropriate performance management system	2012	Fergus	SH_27_88	No
Shannon Town	Clare	1	Implement an appropriate performance management system	2012	Fergus	SH_060_0800	No
Tulla WWTP	Clare	1	Implement an appropriate performance management system	2012	Fergus	SH_27_928	No
Ennistymon WWTP	Clare	1	Implement an appropriate performance management system	2012	Inagh	SH_100_0100	No

Table 4 - Plants requiring the Implementation of an Appropriate Performance Management System

Point Source Discharge	County	Priority	Measure	LA Proposed Date for Completion	WMU	WB Code	Extended Deadline
Liscarroll	Cork North	1	Implement an appropriate performance management system	2012	Blackwater/Awbeg	SW_18_2711	No
Shanballymore	Cork North	1	Implement an appropriate performance management system	2012	Blackwater/Awbeg	SW_18_2677	No
Glanworth	Cork North	1	Implement an appropriate performance management system	2012	Blackwater/Funshion	SW_18_1836	No
Mitchelstown WWTP	Cork North	1	Implement an appropriate performance management system	2012	Blackwater/Funshion	SW_18_1836	No
Bridesbridge	Cork North	1	Implement an appropriate performance management system	2012	BlackwaterBride	SW_18_2778	No
Conna	Cork North	1	Implement an appropriate performance management system	2012	BlackwaterBride	SW_18_2778	No
Milford, Cork	Cork North	1	Implement an appropriate performance management system	2012	Deel/ShannonEstuary	SH_24_863	No
Charleville WWTP	Cork North	1	Implement an appropriate performance management system	2012	Maigue	SH_24_119	No
Bandon WWTP	Cork South	1	Implement an appropriate performance management system	2012	Bandon/Stick	SW_20_2230_2	No
Cloyne WWTP	Cork South	1	Implement an appropriate performance management system	2012	Blackwater	SW_060_0000	No
Cloghroe WWTP	Cork South	1	Implement an appropriate performance management system	2012	LowerLee/Owenboy	SW_19_841	No
Dripsey WWTP	Cork South	1	Implement an appropriate performance management system	2012	SkibbereenClonakilty	SW_19_1713	No

Table 4 - Plants requiring the Implementation of an Appropriate Performance Management System

Point Source Discharge	County	Priority	Measure	LA Proposed Date for Completion	WMU	WB Code	Extended Deadline
Inagh WWTP	Clare	1	Implement an appropriate performance management system	2012	Inagh	SH_28_66	No
Kilmihil WWTP	Clare	1	Implement an appropriate performance management system	2012	Inagh	SH_28_718	No
Ballyclough	Cork North	1	Implement an appropriate performance management system	2012	Blackwater	SW_18_785	No
Ballyhooley	Cork North	1	Implement an appropriate performance management system	2012	Blackwater	SW_18_2292_5	No
Banteer WWTP	Cork North	1	Implement an appropriate performance management system	2012	Blackwater	SW_18_2292_3	No
Killavullen WWTP	Cork North	1	Implement an appropriate performance management system	2012	Blackwater	SW_18_888	No
Kilworth	Cork North	1	Implement an appropriate performance management system	2012	Blackwater	SW_18_2543	No
Newmarket	Cork North	1	Implement an appropriate performance management system	2012	Blackwater	SW_18_394	No
Buttevant WWTP	Cork North	1	Implement an appropriate performance management system	2012	Blackwater/Awbeg	SW_18_2677	No
Castletownroche WWTP	Cork North	1	Implement an appropriate performance management system	2012	Blackwater/Awbeg	SW_18_2677	No
Churchtown WWTP	Cork North	1	Implement an appropriate performance management system	2012	Blackwater/Awbeg	SW_18_2677	No
Doneraile WWTP	Cork North	1	Implement an appropriate performance management system	2012	Blackwater/Awbeg	SW_18_2677	No

Table 4 - Plants requiring the Implementation of an Appropriate Performance Management System

Point Source Discharge	County	Priority	Measure	LA Proposed Date for Completion	WMU	WB Code	Extended Deadline
Castlemartyr WWTP	Cork South	1	Implement an appropriate performance management system	2012	Womanagh	SW_19_1909	No
Clonakilty WWTP	Cork West	1	Implement an appropriate performance management system	2012	SkibbereenClonakilty	SW_100_0100	No
Drimoleague	Cork West	1	Implement an appropriate performance management system	2012	SkibbereenClonakilty	SW_20_876	No
Carrigans	Donegal	1	Implement an appropriate performance management system	2012	Finn/Derg/Foyle	#N/A	No
Burtonport	Donegal	1	Implement an appropriate performance management system	2012	GweebarraBay	#N/A	No
Carrick	Donegal	1	Implement an appropriate performance management system	2012	RossanPoint	NW_37_3547	No
Toberburr WWTP	Fingal	1	Implement an appropriate performance management system	2012	Broadmeadow	EA_08_670	No
Malahide WWTP	Fingal	1	Implement an appropriate performance management system	2012	Donabate	EA_060_0000	No
Portrane WWTP	Fingal	1	Implement an appropriate performance management system	2012	Donabate	EA_020_0000	No
Swords, Dublin	Fingal	1	Implement an appropriate performance management system	2012	Donabate	EA_060_0100	No
Athenry WWTP	Galway County	1	Implement an appropriate performance management system	2012	Clarinbridge	WE_29_310	No
Loughrea WWTP	Galway County	1	Implement an appropriate performance management system	2012	Clarinbridge	WE_29_513	No

Table 4 - Plants requiring the Implementation of an Appropriate Performance Management System

Point Source Discharge	County	Priority	Measure	LA Proposed Date for Completion	WMU	WB Code	Extended Deadline
Gort WWTP	Galway County	1	Implement an appropriate performance management system	2012	Kinvara	WE_29_2	No
Killimor WWTP	Galway County	1	Implement an appropriate performance management system	2012	LoughDerg	SH_25_3454	No
Moylough	Galway County	1	Implement an appropriate performance management system	2012	Suck	SH_26_2889	No
Rathmore WWTP	Kerry	1	Implement an appropriate performance management system	2012	Blackwater	SW_18_449	No
Farranfore	Kerry	1	Implement an appropriate performance management system	2012	NorthDingleBay	SW_22_888	No
Kildare Town WWTP	Kildare	1	Implement an appropriate performance management system	2012	BarrowMain	SE_14_842	No
Rathangan WWTP	Kildare	1	Implement an appropriate performance management system	2012	Figile	SE_14_999	No
Graignamanagh Sewerage Scheme WWTP	Kilkenny	1	Implement an appropriate performance management system	2012	BarrowLower	SE_14_1909	No
Paulstown Sewerage Scheme WWTP	Kilkenny	1	Implement an appropriate performance management system	2012	BarrowMain	SE_14_196_5	No
Castlecomer Sewerage Scheme WWTP	Kilkenny	1	Implement an appropriate performance management system	2012	DIin	SE_15_109	No
Clogh-Moneenroe Sewerage Scheme WWTP	Kilkenny	1	Implement an appropriate performance management system	2012	DIin	SE_15_109	No
Urlingford Sewerage Scheme WWTP	Kilkenny	1	Implement an appropriate performance management system	2012	Erkina	SE_15_196	No

Table 4 - Plants requiring the Implementation of an Appropriate Performance Management System

Point Source Discharge	County	Priority	Measure	LA Proposed Date for Completion	WMU	WB Code	Extended Deadline
Callan Sewerage Scheme WWTP	Kilkenny	1	Implement an appropriate performance management system	2012	Kings	SE_15_1819	No
Stonyford Sewerage Scheme WWTP	Kilkenny	1	Implement an appropriate performance management system	2012	Kings	SE_15_1991	No
Ballyraggett Sewerage Scheme WWTP	Kilkenny	1	Implement an appropriate performance management system	2012	NoreMain	SE_15_1994_2	No
Kilkenny City (Purcellsinch) WWTP	Kilkenny	1	Implement an appropriate performance management system	2012	NoreMain	SE_15_1994_4	No
Mooncoin Sewerage Scheme WWTP	Kilkenny	1	Implement an appropriate performance management system	2012	SuirEstuary	SE_100_0500	No
Mountmellick WWTP	Laois	1	Implement an appropriate performance management system	2012	Barrow/Owenass/Triogue	SE_14_1718	No
Portlaoise WWTP	Laois	1	Implement an appropriate performance management system	2012	Barrow/Owenass/Triogue	SE_14_1016	No
Ballylinan WWTP	Laois	1	Implement an appropriate performance management system	2012	BarrowMain	SE_14_196_3	No
The Swan	Laois	1	Implement an appropriate performance management system	2012	DInin	SE_15_1163	No
Borris-in-Ossory WWTP	Laois	1	Implement an appropriate performance management system	2012	NoreUpper	SE_15_1018	No
Castletown WWTP	Laois	1	Implement an appropriate performance management system	2012	NoreUpper	SE_15_1836	No
Stradbally, Laois	Laois	1	Implement an appropriate performance management system	2012	Stradbally	SE_14_575	No

Table 4 - Plants requiring the Implementation of an Appropriate Performance Management System

Point Source Discharge	County	Priority	Measure	LA Proposed Date for Completion	WMU	WB Code	Extended Deadline
Dromod	Leitrim	1	Implement an appropriate performance management system	2012	UpperShannon	SH_26_3928	No
Limerick	Limerick City	1	Implement an appropriate performance management system	2012	Maigue	SH_060_0900	No
Askeaton WWTP	Limerick County	1	Implement an appropriate performance management system	2012	Deel/ShannonEstuary	SH_060_0600	No
Dromcollagher	Limerick County	1	Implement an appropriate performance management system	2012	Deel/ShannonEstuary	SH_24_1621	No
Adare WWTP	Limerick County	1	Implement an appropriate performance management system	2012	Maigue	SH_060_0700	No
Ballingarry, Limerick	Limerick County	1	Implement an appropriate performance management system	2012	Maigue	SH_24_1573	No
Bruff WWTP	Limerick County	1	Implement an appropriate performance management system	2012	Maigue	SH_24_838	No
Bruree WWTP	Limerick County	1	Implement an appropriate performance management system	2012	Maigue	SH_24_189	No
Caherconlish	Limerick County	1	Implement an appropriate performance management system	2012	Maigue	SH_25_513	No
Hospital WWTP	Limerick County	1	Implement an appropriate performance management system	2012	Maigue	SH_24_776	No
Kilfinnane	Limerick County	1	Implement an appropriate performance management system	2012	Maigue	SH_24_738	No
Kilmallock WWTP	Limerick County	1	Implement an appropriate performance management system	2012	Maigue	SH_24_189	No

Table 4 - Plants requiring the Implementation of an Appropriate Performance Management System

Point Source Discharge	County	Priority	Measure	LA Proposed Date for Completion	WMU	WB Code	Extended Deadline
Balla	Mayo	1	Implement an appropriate performance management system	2012	Conn	WE_34_1731	No
Ballycastle WWTP	Mayo	1	Implement an appropriate performance management system	2012	Conn	WE_33_2091	No
Belcarra WWTP	Mayo	1	Implement an appropriate performance management system	2012	Conn	WE_34_1731	No
Castlebar WWTP	Mayo	1	Implement an appropriate performance management system	2012	Conn	WE_34_3953	No
Cong WWTP	Mayo	1	Implement an appropriate performance management system	2012	Corrib	WE_30_3419	No
Shrule WWTP	Mayo	1	Implement an appropriate performance management system	2012	Corrib	WE_30_1151	No
Ballindine WWTP	Mayo	1	Implement an appropriate performance management system	2012	Mask	WE_30_2655	No
Ballinrobe WWTP	Mayo	1	Implement an appropriate performance management system	2012	Mask	WE_30_3370_4	No
Achill Island Central WWTP	Mayo	1	Implement an appropriate performance management system	2012	MayoWest	WE_250_0000	No
Bangor Erris WWTP	Mayo	1	Implement an appropriate performance management system	2012	MayoWest	WE_33_3204	No
Ballina, Mayo	Mayo	1	Implement an appropriate performance management system	2012	Moy	WE_420_0300	No
Charlestown WWTP	Mayo	1	Implement an appropriate performance management system	2012	Moy	WE_34_2464	No

Table 4 - Plants requiring the Implementation of an Appropriate Performance Management System

Point Source Discharge	County	Priority	Measure	LA Proposed Date for Completion	WMU	WB Code	Extended Deadline
Foxford WWTP	Mayo	1	Implement an appropriate performance management system	2012	Moy	WE_34_3982	No
Swinford WWTP	Mayo	1	Implement an appropriate performance management system	2012	Moy	WE_34_2499	No
Kildalkey	Meath	1	Implement an appropriate performance management system	2012	Athboy	EA_07_971	No
Kells WWTP	Meath	1	Implement an appropriate performance management system	2012	BlackwaterNorth	EA_07_1536_2	No
Slane WWTP	Meath	1	Implement an appropriate performance management system	2012	BoyneLower	EA_07_1894_3	No
Kentstown	Meath	1	Implement an appropriate performance management system	2012	Nanny	EA_08_298	No
Ballinode WWTP	Monaghan	1	Implement an appropriate performance management system	2012	Blackwater	XB_03_8	No
Emyvale WWTP	Monaghan	1	Implement an appropriate performance management system	2012	Blackwater	XB_03_6	No
Glaslough WWTP	Monaghan	1	Implement an appropriate performance management system	2012	Blackwater	NB_03_416	No
Knockaconny WWTP	Monaghan	1	Implement an appropriate performance management system	2012	Blackwater	XB_03_5	No
Knockatallon WWTP	Monaghan	1	Implement an appropriate performance management system	2012	Blackwater	NB_03_16	No
Scotstown WWTP	Monaghan	1	Implement an appropriate performance management system	2012	Blackwater	XB_03_8	No

Table 4 - Plants requiring the Implementation of an Appropriate Performance Management System

Point Source Discharge	County	Priority	Measure	LA Proposed Date for Completion	WMU	WB Code	Extended Deadline
Clones WWTP	Monaghan	1	Implement an appropriate performance management system	2012	ErneEast	XB_36_east_3	No
Newbliss WWTP	Monaghan	1	Implement an appropriate performance management system	2012	ErneEast	NW_36_1288	No
Scotshouse WWTP	Monaghan	1	Implement an appropriate performance management system	2012	ErneEast	XB_36_east_14	No
Castleblayney WWTP	Monaghan	1	Implement an appropriate performance management system	2012	Fane	NB_06_56	No
Carrickmacross WWTP	Monaghan	1	Implement an appropriate performance management system	2012	Glyde	NB_06_910	No
Rhode WWTP	Offaly	1	Implement an appropriate performance management system	2012	BoyneUpper	EA_07_332	No
Birr WWTP	Offaly	1	Implement an appropriate performance management system	2012	Brosna	SH_25_2146	No
Cloghan WWTP	Offaly	1	Implement an appropriate performance management system	2012	Brosna	SH_25_3014	No
Kilcormac WWTP	Offaly	1	Implement an appropriate performance management system	2012	Brosna	SH_25_3701	No
Mucklagh WWTP	Offaly	1	Implement an appropriate performance management system	2012	Brosna	SH_25_550	No
Shinrone WWTP	Offaly	1	Implement an appropriate performance management system	2012	Brosna	SH_25_877	No
Daingean WWTP	Offaly	1	Implement an appropriate performance management system	2012	Figile	SE_14_1561	No

Table 4 - Plants requiring the Implementation of an Appropriate Performance Management System

Point Source Discharge	County	Priority	Measure	LA Proposed Date for Completion	WMU	WB Code	Extended Deadline
Termonbarry	Roscommon	1	Implement an appropriate performance management system	2012	Hind/LoughRee	SH_26_4162	No
Ballinlough WWTP	Roscommon	1	Implement an appropriate performance management system	2012	Suck	SH_26_1359	No
Strokestown WWTP	Roscommon	1	Implement an appropriate performance management system	2012	UpperShannon	SH_26_1004	No
Ballymote WWTP	Sligo	1	Implement an appropriate performance management system	2012	Ballysadare	WE_35_938	No
Gurteen WWTP	Sligo	1	Implement an appropriate performance management system	2012	Ballysadare	WE_35_782	No
Riverstown WWTP	Sligo	1	Implement an appropriate performance management system	2012	Ballysadare	WE_35_4019	No
Tipperary WWTP	South Tipp	1	Implement an appropriate performance management system	2012	Aherlow	SE_16_1127	No
Clerihan WWTP	South Tipp	1	Implement an appropriate performance management system	2012	Anner	SE_16_4098	No
Killenaule WWTP	South Tipp	1	Implement an appropriate performance management system	2012	Anner	SE_16_2360	No
Limerick Junction	South Tipp	1	Implement an appropriate performance management system	2012	Mulkear	SH_25_3875	No
Carrick-on-Suir	South Tipp	1	Implement an appropriate performance management system	2012	SuirEstuary	SE_16_4191	No
Ardfinnan WWTP	South Tipp	1	Implement an appropriate performance management system	2012	SuirMain	SE_16_4181_3	No

Table 4 - Plants requiring the Implementation of an Appropriate Performance Management System

Point Source Discharge	County	Priority	Measure	LA Proposed Date for Completion	WMU	WB Code	Extended Deadline
Cahir WWTP	South Tipp	1	Implement an appropriate performance management system	2012	SuirMain	SE_16_4181_3	No
Cashel WWTP	South Tipp	1	Implement an appropriate performance management system	2012	SuirMain	SE_16_4181_1	No
Clonmel WWTP	South Tipp	1	Implement an appropriate performance management system	2012	SuirMain	SE_16_4181_5	No
Lismore WWTP	Waterford County	1	Implement an appropriate performance management system	2012	Blackwater	SW_18_2755	No
Piltown	Waterford County	1	Implement an appropriate performance management system	2012	BlackwaterEstuary	SW_020_0100	No
Ballinroad WWTP	Waterford County	1	Implement an appropriate performance management system	2012	ColliganMahon	SE_140_0100	No
Ring/Helvick/Ballinagoul WWTP	Waterford County	1	Implement an appropriate performance management system	2012	ColliganMahon	SE_140_0000	No
Portlaw WWTP	Waterford County	1	Implement an appropriate performance management system	2012	SuirEstuary	SE_100_0500	No
Clonmellon WWTP	Westmeath	1	Implement an appropriate performance management system	2012	Athboy	EA_07_944	No
Kinnegad WWTP	Westmeath	1	Implement an appropriate performance management system	2012	BoyneUpper	EA_07_234	No
Rochfortbridge WWTP	Westmeath	1	Implement an appropriate performance management system	2012	BoyneUpper	EA_07_1025	No
Moate WWTP	Westmeath	1	Implement an appropriate performance management system	2012	Brosna	SH_25_567	No

Table 4 - Plants requiring the Implementation of an Appropriate Performance Management System

Point Source Discharge	County	Priority	Measure	LA Proposed Date for Completion	WMU	WB Code	Extended Deadline
Tyrellspass WWTP	Westmeath	1	Implement an appropriate performance management system	2012	Brosna	SH_25_3789	No
Killucan WWTP	Westmeath	1	Implement an appropriate performance management system	2012	Deel	EA_07_1015	No
Castlepollard WWTP	Westmeath	1	Implement an appropriate performance management system	2012	Inny	SH_26_1091	No
Multyfarnham WWTP	Westmeath	1	Implement an appropriate performance management system	2012	Inny	SH_26_3006	No
Adamstown	Wexford	1	Implement an appropriate performance management system	2012	BallyteigueBannow	SE_13_285	No
Bridgetown, Wexford	Wexford	1	Implement an appropriate performance management system	2012	BallyteigueBannow	SE_13_692	No
Carrick-on-Bannow	Wexford	1	Implement an appropriate performance management system	2012	BallyteigueBannow	SE_13_662	No
Clonroche	Wexford	1	Implement an appropriate performance management system	2012	BoroUrrin	SE_12_2601	No
Courtown/Riverchapel WWTP	Wexford	1	Implement an appropriate performance management system	2012	Owenavorrigh	SE_010_0000	No
Gorey WWTP	Wexford	1	Implement an appropriate performance management system	2012	Owenavorrigh	SE_11_257	No
Kilmuckridge WWTP	Wexford	1	Implement an appropriate performance management system	2012	Owenavorrigh	SE_010_0000	No
Ballymurn	Wexford	1	Implement an appropriate performance management system	2012	SlaneyEstuary	SE_12_2504	No

Table 4 - Plants requiring the Implementation of an Appropriate Performance Management System

Point Source Discharge	County	Priority	Measure	LA Proposed Date for Completion	WMU	WB Code	Extended Deadline
Piercetown WWTP	Wexford	1	Implement an appropriate performance management system	2012	SlaneyEstuary	SE_12_149	No
Rosslare Strand WWTP	Wexford	1	Implement an appropriate performance management system	2012	SlaneyEstuary	SE_010_0000	No
Enniscorthy WWTP	Wexford	1	Implement an appropriate performance management system	2012	SlaneyLower	SE_040_0300	No
Aughrim WWTP	Wicklow	1	Implement an appropriate performance management system	2012	Avoca	EA_10_1339	No
Ballinaclash WWTP	Wicklow	1	Implement an appropriate performance management system	2012	Avoca	EA_10_99	No
Laragh	Wicklow	1	Implement an appropriate performance management system	2012	Avoca	EA_10_721	No
Thomastown	Wicklow	1	Implement an appropriate performance management system	2012	Avoca	EA_10_1021	No
Enniskerry WWTP	Wicklow	1	Implement an appropriate performance management system	2012	Dargle	EA_10_1277	No
Carnew, Wicklow	Wicklow	1	Implement an appropriate performance management system	2012	Derry	SE_12_757	No
Shillelagh	Wicklow	1	Implement an appropriate performance management system	2012	Derry	SE_12_2095	No
Tinahely WWTP	Wicklow	1	Implement an appropriate performance management system	2012	Derry	SE_12_1442	No
Dunlavin Milltown WWTP	Wicklow	1	Implement an appropriate performance management system	2012	GreeseLerr	SE_14_1747	No

Table 4 - Plants requiring the Implementation of an Appropriate Performance Management System

Point Source Discharge	County	Priority	Measure	LA Proposed Date for Completion	WMU	WB Code	Extended Deadline
Blessington WWTP	Wicklow	1	Implement an appropriate performance management system	2012	Liffey	EA_09_1870_1	No
Kilcoole WWTP	Wicklow	1	Implement an appropriate performance management system	2012	Newcastle	EA_120_0100	No
Kilpedder WWTP	Wicklow	1	Implement an appropriate performance management system	2012	Newcastle	EA_120_0100	No
Newcastle WWTP	Wicklow	1	Implement an appropriate performance management system	2012	Newcastle	EA_10_1589	No
Baltinglass 1 WWTP	Wicklow	1	Implement an appropriate performance management system	2012	SlaneyUpper	SE_12_1524	No
Ashford WWTP	Wicklow	1	Implement an appropriate performance management system	2012	Vartry	EA_10_1601	No
Roundwood	Wicklow	1	Implement an appropriate performance management system	2012	Vartry	EA_10_1471	No

Appendix E
Plants requiring the investigation of CSO's

Table 5 - Plants requiring the investigation of CSO's

Point Source Discharge	County	Priority	Measure	LA Proposed Date for Completion	WMU	WB Code	Extended Deadline
Mortarstown WWTP	Carlow	2	Investigation of CSO's	2012	BarrowMain	SE_14_196_4	No
Fenagh	Carlow	3	Investigation of CSO's	2015	Burren	SE_14_1546	Yes
Palatine	Carlow	2	Investigation of CSO's	2012	GreeseLerr	SE_14_429	No
Ballon	Carlow	3	Investigation of CSO's	2015	SlaneyLower	SE_12_1859	Yes
Myshal	Carlow	3	Investigation of CSO's	2015	SlaneyLower	SE_12_789	Yes
Belturbet WWTP	Cavan	2	Investigation of CSO's	2012	ErneEast	XB_36_east_4	No
Tulla WWTP	Clare	3	Investigation of CSO's	2015	Fergus	SH_27_928	Yes
Scarriff WWTP	Clare	3	Investigation of CSO's	2015	LoughDerg	SH_25_2142	Yes
Kanturk WWTP	Cork North	2	Investigation of CSO's	2015	Blackwater	SW_18_394	Yes
Killavullen WWTP	Cork North	2	Investigation of CSO's	2015	Blackwater	SW_18_888	Yes
Kilworth	Cork North	2	Investigation of CSO's	2015	Blackwater	SW_18_2543	Yes
Newmarket	Cork North	2	Investigation of CSO's	2015	Blackwater	SW_18_394	Yes

Table 5 - Plants requiring the investigation of CSO's

Point Source Discharge	County	Priority	Measure	LA Proposed Date for Completion	WMU	WB Code	Extended Deadline
Castletownroche WWTP	Cork North	2	Investigation of CSO's	2015	Blackwater/Awbeg	SW_18_2677	Yes
Doneraile WWTP	Cork North	2	Investigation of CSO's	2015	Blackwater/Awbeg	SW_18_2677	Yes
Liscarroll	Cork North	2	Investigation of CSO's	2015	Blackwater/Awbeg	SW_18_2711	Yes
Mitchelstown WWTP	Cork North	2	Investigation of CSO's	2015	Blackwater/Funshion	SW_18_1836	Yes
Watergrasshill WWTP	Cork North	2	Investigation of CSO's	2015	BlackwaterBride	SW_18_2264	Yes
Ballynoe	Cork North	3	Investigation of CSO's	2015	BlackwaterBride	SW_18_2042	Yes
Charleville WWTP	Cork North	3	Investigation of CSO's	2015	Maigue	SH_24_119	Yes
Minane Bridge	Cork South	3	Investigation of CSO's		Bandon/Stick	SW_050_0000	No
Blarney/Tower WWTP	Cork South	3	Investigation of CSO's	2015	LowerLee/Owenboy	SW_19_1827	Yes
Crossbarry	Cork South	3	Investigation of CSO's		LowerLee/Owenboy	SW_19_1584	No
Ballineen Sewerage Schen	Cork West	2	Investigation of CSO's	2015	Bandon/Stick	SW_20_2230_1	Yes
Killygordan WWTP	Donegal	2	Investigation of CSO's	2015	Finn/Derg/Foyle	XB_01_1_1	Yes

Table 5 - Plants requiring the investigation of CSO's

Point Source Discharge	County	Priority	Measure	LA Proposed Date for Completion	WMU	WB Code	Extended Deadline
Glenties WWTP	Donegal	2	Investigation of CSO's	2015	Owenea	NW_38_1168	Yes
Carrick	Donegal	3	Investigation of CSO's	2015	RossanPoint	NW_37_3547	Yes
Glencolumkille	Donegal	3	Investigation of CSO's	2015	RossanPoint	NW_38_1342	Yes
Balgriffin	Dublin City	3	Investigation of CSO's	2015	SantryMayneSluice	EA_09_1428	Yes
Rowelstown	Fingal	3	Investigation of CSO's	2015	Broadmeadow	EA_08_295	Yes
Toberburr WWTP	Fingal	3	Investigation of CSO's	2015	Broadmeadow	EA_08_670	Yes
Athenry WWTP	Galway County	3	Investigation of CSO's	2015	Clarinbridge	WE_29_310	Yes
Gort WWTP	Galway County	2	Investigation of CSO's	2021	Kinvara	WE_29_2	Yes
Killimor WWTP	Galway County	3	Investigation of CSO's	2021	LoughDerg	SH_25_3454	Yes
Ballinasloe WWTP	Galway County	2	Investigation of CSO's	2015	Suck	SH_26_1447_5	Yes
Rathmore WWTP	Kerry	2	Investigation of CSO's	2012	Blackwater	SW_18_449	No
Listowel WWTP	Kerry	2	Investigation of CSO's	2015+	Feale	SH_23_2941	Yes

Table 5 - Plants requiring the investigation of CSO's

Point Source Discharge	County	Priority	Measure	LA Proposed Date for Completion	WMU	WB Code	Extended Deadline
Castleisland WWTP	Kerry	3	Investigation of CSO's	2015	NorthDingleBay	SW_22_3452	Yes
Tralee WWTP	Kerry	3	Investigation of CSO's	2015+	NorthKerry/TraleeBay	SH_050_0000	Yes
Kildare Town WWTP	Kildare	3	Investigation of CSO's	2015	BarrowMain	SE_14_842	Yes
Allenwood WWTP	Kildare	2	Investigation of CSO's	2012	Figile	SE_14_999	No
Coill Dubh WWTP	Kildare	2	Investigation of CSO's	2012	Figile	SE_14_999	No
Milltown, Kildare	Kildare	2	Investigation of CSO's	2012	Figile	SE_14_1870	No
Robertstown WWTP	Kildare	2	Investigation of CSO's	2012	Figile	SE_14_999	No
Kilkea	Kildare	2	Investigation of CSO's	2012	GreeseLerr	SE_14_946	No
Callan Sewerage Scheme	Kilkenny	2	Investigation of CSO's	2012	Kings	SE_15_1819	No
Kilkenny City (Purcellsinc	Kilkenny	2	Investigation of CSO's	2012	NoreMain	SE_15_1994_4	No
Castlecomer Sewerage Sch	Kilkenny	2	Investigation of CSO's	2012	DIInin	SE_15_109	No
Mountmellick WWTP	Laois	2	Investigation of CSO's	2012	Barrow/Owenass/Triogu	SE_14_1718	No

Table 5 - Plants requiring the investigation of CSO's

Point Source Discharge	County	Priority	Measure	LA Proposed Date for Completion	WMU	WB Code	Extended Deadline
Portarlinton WWTP	Laois	2	Investigation of CSO's	2012	BarrowMain	SE_14_196_1	No
Castletown WWTP	Laois	2	Investigation of CSO's	2012	NoreUpper	SE_15_1836	No
Stradbally, Laois	Laois	2	Investigation of CSO's	2012	Stradbally	SE_14_575	No
NewtownGore	Leitrim	2	Investigation of CSO's	2015	ErneMid	XB_36_EAST_5	Yes
Keshcarrigan WWTP	Leitrim	3	Investigation of CSO's	2015	ErneMid	NW_36_2175	Yes
Dromod	Leitrim	2	Investigation of CSO's	2015	UpperShannon	SH_26_3928	Yes
Drumshanbo WWTP	Leitrim	2	Investigation of CSO's	2015	UpperShannon	SH_26_59	Yes
Castletroy WWTP	Limerick County	2	Investigation of CSO's	2012	LoughDerg	SH_25_3904_2	No
Ballingarry, Limerick	Limerick County	3	Investigation of CSO's	2015	Maigue	SH_24_1573	Yes
Bruree WWTP	Limerick County	3	Investigation of CSO's	2015	Maigue	SH_24_189	Yes
Caherconlish	Limerick County	3	Investigation of CSO's	2015	Maigue	SH_25_513	Yes
Longford WWTP	Longford	2	Investigation of CSO's	2015	Camlin/Rinn	SH_26_3927_2	Yes

Table 5 - Plants requiring the investigation of CSO's

Point Source Discharge	County	Priority	Measure	LA Proposed Date for Completion	WMU	WB Code	Extended Deadline
Edgeworthstown WWTP	Longford	3	Investigation of CSO's	2015	Inny	SH_26_3870	Yes
Legan WWTP	Longford	3	Investigation of CSO's	2015	Inny	SH_26_4098	Yes
Ardee WWTP	Louth	3	Investigation of CSO's	2015	Dee	NB_06_1099	Yes
Ballyhaunis WWTP	Mayo	3	Investigation of CSO's	2015	ClareRiver	WE_30_211	Yes
Balla	Mayo	2	Investigation of CSO's	2013	Conn	WE_34_1731	Yes
Ballycastle WWTP	Mayo	3	Investigation of CSO's	2015	Conn	WE_33_2091	Yes
Ballindine WWTP	Mayo	3	Investigation of CSO's	2015	Mask	WE_30_2655	Yes
Knock WWTP	Mayo	3	Investigation of CSO's	2015	Moy	WE_34_3069	Yes
Athboy WWTP	Meath	2	Investigation of CSO's	2015	Athboy	EA_07_971	Yes
IDA (Kells)	Meath	2	Investigation of CSO's	2015	BlackwaterNorth	EA_07_1536_2	Yes
Kells WWTP	Meath	2	Investigation of CSO's	2015	BlackwaterNorth	EA_07_1536_2	Yes
Moynalty	Meath	3	Investigation of CSO's	2015	BlackwaterNorth	EA_07_940	Yes

Table 5 - Plants requiring the investigation of CSO's

Point Source Discharge	County	Priority	Measure	LA Proposed Date for Completion	WMU	WB Code	Extended Deadline
Slane WWTP	Meath	2	Investigation of CSO's	2015	BoyneLower	EA_07_1894_3	Yes
Lobinstown	Meath	3	Investigation of CSO's	2015	Dee	NB_06_557	Yes
Duleek WWTP	Meath	3	Investigation of CSO's	2015	Nanny	EA_08_814	Yes
Knockaconny WWTP	Monaghan	2	Investigation of CSO's		Blackwater	XB_03_5	No
Glaslough WWTP	Monaghan	3	Investigation of CSO's		Blackwater	NB_03_416	No
Castleblayney WWTP	Monaghan	2	Investigation of CSO's	2015+	Fane	NB_06_56	Yes
Annayalla WWTP	Monaghan	3	Investigation of CSO's		Fane	NB_06_406	No
Oram WWTP	Monaghan	3	Investigation of CSO's		Fane	XB_06_14	No
Rockcorry WWTP	Monaghan	3	Investigation of CSO's	2015+	Woodford	NW_36_237	Yes
Clones WWTP	Monaghan	2	Investigation of CSO's	2015+	ErneEast	XB_36_east_3	Yes
Monaghan WWTP	Monaghan	3	Investigation of CSO's	2015+	Blackwater	NB_03_479	Yes
Carrickmacross WWTP	Monaghan	2	Investigation of CSO's	2011	Glyde	NB_06_910	No

Table 5 - Plants requiring the investigation of CSO's

Point Source Discharge	County	Priority	Measure	LA Proposed Date for Completion	WMU	WB Code	Extended Deadline
Ballybay WWTP	Monaghan	2	Investigation of CSO's	2015+	Woodford	NW_36_30	Yes
Roscrea WWTP	North Tipp	2	Investigation of CSO's	2012	Brosna	SH_25_633	No
Lorrha	North Tipp	3	Investigation of CSO's	2015	LoughDerg	SH_25_2507	Yes
Newtown	North Tipp	3	Investigation of CSO's	2015	LoughDerg	SH_25_2785	Yes
Portroe	North Tipp	3	Investigation of CSO's	2015	LoughDerg	SH_25_2530	Yes
Newport, North Tipp	North Tipp	3	Investigation of CSO's	2015	Mulkear	SH_25_320	Yes
Borrisokane WWTP	North Tipp	3	Investigation of CSO's	2015	Nenagh	SH_25_3530	Yes
Nenagh WWTP	North Tipp	3	Investigation of CSO's	2015	Nenagh	SH_25_335	Yes
Silvermines	North Tipp	3	Investigation of CSO's	2015	Nenagh	SH_25_3715	Yes
Toomevara	North Tipp	3	Investigation of CSO's	2015	Nenagh	SH_25_402	Yes
Thurles WWTP	North Tipp	3	Investigation of CSO's	2015	SuirUpper	SE_16_3993	Yes
Edenderry WWTP	Offaly	2	Investigation of CSO's	2015	BoyneUpper	EA_07_990	Yes

Table 5 - Plants requiring the investigation of CSO's

Point Source Discharge	County	Priority	Measure	LA Proposed Date for Completion	WMU	WB Code	Extended Deadline
Kinnitty WWTP	Offaly	2	Investigation of CSO's	2012	Brosna	SH_25_2084	No
Geashill WWTP	Offaly	3	Investigation of CSO's		Brosna	SH_25_542	No
Daingean WWTP	Offaly	3	Investigation of CSO's	2015	Figile	SE_14_1561	Yes
Cloonfad WWTP	Roscommon	3	Investigation of CSO's	2015	ClareRiver	WE_30_2327	Yes
Monksland WWTP	Roscommon	2	Investigation of CSO's	2012	Hind/LoughRee	SH_26_1111	No
Strokestown WWTP	Roscommon	3	Investigation of CSO's	2012	UpperShannon	SH_26_1004	No
Riverstown WWTP	Sligo	2	Investigation of CSO's	2012	Ballysadare	WE_35_4019	No
Ballymote WWTP	Sligo	3	Investigation of CSO's	2015	Ballysadare	WE_35_938	Yes
Sligo	Sligo	2	Investigation of CSO's	2012	Garravogue	WE_470_0000	No
Tubbercurry WWTP	Sligo	3	Investigation of CSO's	2015	Moy	WE_34_2633	Yes
Bansha WWTP	South Tipp	3	Investigation of CSO's	2015	Aherlow	SE_16_2303	Yes
Lisvernane	South Tipp	3	Investigation of CSO's	2015	Aherlow	SE_16_1178	Yes

Table 5 - Plants requiring the investigation of CSO's

Point Source Discharge	County	Priority	Measure	LA Proposed Date for Completion	WMU	WB Code	Extended Deadline
Cloneen	South Tipp	3	Investigation of CSO's	2015	Anner	SE_16_3950	Yes
Drangan WWTP	South Tipp	3	Investigation of CSO's	2015	Anner	SE_16_1537	Yes
Lisronagh WWTP	South Tipp	3	Investigation of CSO's	2015	Anner	SE_16_2322	Yes
Rosegreen WWTP	South Tipp	3	Investigation of CSO's	2015	Anner	SE_16_958	Yes
Gortnahoe WWTP	South Tipp	3	Investigation of CSO's	2015	Drish	SE_16_3521	Yes
Ballingarry, South Tipp	South Tipp	3	Investigation of CSO's	2015	Kings	SE_15_282	Yes
Coalbrook	South Tipp	3	Investigation of CSO's	2015	Kings	SE_15_699	Yes
Commons WWTP	South Tipp	3	Investigation of CSO's	2015	Kings	SE_15_1736	Yes
Cappawhite WWTP	South Tipp	2	Investigation of CSO's	2012	Mulkear	SH_25_3235	No
Limerick Junction	South Tipp	3	Investigation of CSO's	2015	Mulkear	SH_25_3875	Yes
Dundrum WWTP	South Tipp	3	Investigation of CSO's	2015	Multeen	SE_16_3825	Yes
Faugheen WWTP	South Tipp	3	Investigation of CSO's	2015	SuirEstuary	SE_16_4197	Yes

Table 5 - Plants requiring the investigation of CSO's

Point Source Discharge	County	Priority	Measure	LA Proposed Date for Completion	WMU	WB Code	Extended Deadline
Boherlahan WWTP	South Tipp	2	Investigation of CSO's	2012	SuirMain	SE_16_4181_1	No
Cashel WWTP	South Tipp	2	Investigation of CSO's	2012	SuirMain	SE_16_4181_1	No
Clonmel WWTP	South Tipp	2	Investigation of CSO's	2012	SuirMain	SE_16_4181_5	No
Ballypatrick	South Tipp	3	Investigation of CSO's	2015	SuirMain	SE_16_3845	Yes
Golden WWTP	South Tipp	3	Investigation of CSO's	2015	SuirMain	SE_16_4181_2	Yes
New Inn WWTP	South Tipp	3	Investigation of CSO's	2015	SuirMain	SE_16_3843	Yes
Newcastle, South Tipp.	South Tipp	3	Investigation of CSO's	2015	SuirMain	SE_16_4181_4	Yes
Milltownpass	Westmeath	3	Investigation of CSO's		BoyneUpper	EA_07_1009	No
Ratarney	Westmeath	2	Investigation of CSO's		Deel	EA_07_1012	No
Killucan - Rathwire	Westmeath	3	Investigation of CSO's		Deel	EA_07_1015	No
Castlepollard WWTP	Westmeath	3	Investigation of CSO's	2010	Inny	SH_26_1091	No
Collinstown	Westmeath	3	Investigation of CSO's	2010	Inny	SH_26_1091	No

Table 5 - Plants requiring the investigation of CSO's

Point Source Discharge	County	Priority	Measure	LA Proposed Date for Completion	WMU	WB Code	Extended Deadline
Multyfarnham WWTP	Westmeath	3	Investigation of CSO's	2010	Inny	SH_26_3006	No
Delvin WWTP	Westmeath	2	Investigation of CSO's	2012	Stonyford	EA_07_248	No
Foulkesmills	Wexford	3	Investigation of CSO's	2015	BallyteigueBannow	SE_13_397	Yes
Galbally, Wexford	Wexford	2	Investigation of CSO's	2012	SlaneyEstuary	SE_12_3	No
Kirakee	Wicklow	2	Investigation of CSO's	2012	Avoca	EA_10_99	No
Newcastle WWTP	Wicklow	2	Investigation of CSO's	2012	Newcastle	EA_10_1589	No
Baltinglass 1 WWTP	Wicklow	2	Investigation of CSO's	2012	SlaneyUpper	SE_12_1524	No
Ashford WWTP	Wicklow	2	Investigation of CSO's	2012	Vartry	EA_10_1601	No

Appendix F
**Plants required to ensure capacity of treatment
plant is not exceeded**

Table 6 - Plants required to ensure capacity of treatment plant is not exceeded

Point Source Discharge	County	Priority	Measure	LA Proposed Date for Completion	WMU	WB Code	Extended Deadline
Borris WWTP	Carlow	2	Ensure capacity of treatment plant is not exceeded	2010	BarrowLower	SE_14_937	No
Clonmore	Carlow	2	Ensure capacity of treatment plant is not exceeded	2010	BarrowMain	SE_14_1283	No
Mortarstown WWTP	Carlow	2	Ensure capacity of treatment plant is not exceeded	2010	BarrowMain	SE_14_196_4	No
Nurney	Carlow	3	Ensure capacity of treatment plant is not exceeded	2010	BarrowMain	SE_14_1102	No
Fenagh	Carlow	3	Ensure capacity of treatment plant is not exceeded	2010	Burren	SE_14_1546	No
Rathoe	Carlow	3	Ensure capacity of treatment plant is not exceeded	2010	Burren	SE_14_1781	No
Ticknock	Carlow	2	Ensure capacity of treatment plant is not exceeded	2010	Derreen	SE_12_721	No
Ballon	Carlow	3	Ensure capacity of treatment plant is not exceeded	2010	SlaneyLower	SE_12_1859	No
Bailieborough WWTP	Cavan	3	Ensure capacity of treatment plant is not exceeded	2010	BlackwaterNorth	EA_07_581	No
Killeshandra WWTP	Cavan	2	Ensure capacity of treatment plant is not exceeded	2010	ErneEast	NW_36_188	No
Kingscourt WWTP	Cavan	3	Ensure capacity of treatment plant is not exceeded	2010	Glyde	NB_06_712	No
Ballyjamesduff WWTP	Cavan	3	Ensure capacity of treatment plant is not exceeded	2010	Inny	SH_26_2264	No
Ballinagh WWTP	Cavan	3	Ensure capacity of treatment plant is not exceeded	2010	Woodford	NW_36_2100	No
Cootehill WWTP	Cavan	3	Ensure capacity of treatment plant is not exceeded	2010	Woodford	NW_36_237	No
Clare Abbey WWTP	Clare	2	Ensure capacity of treatment plant is not exceeded	2010	Fergus	SH_27_1122	No
Kilkishen	Clare	3	Ensure capacity of treatment plant is not exceeded	2010	Fergus	SH_27_234	No

Table 6 - Plants required to ensure capacity of treatment plant is not exceeded

Point Source Discharge	County	Priority	Measure	LA Proposed Date for Completion	WMU	WB Code	Extended Deadline
Ennistymon WWTP	Clare	2	Ensure capacity of treatment plant is not exceeded	2010	Inagh	SH_100_0100	No
Inagh WWTP	Clare	3	Ensure capacity of treatment plant is not exceeded	2010	Inagh	SH_28_66	No
Kilmihil WWTP	Clare	3	Ensure capacity of treatment plant is not exceeded	2010	Inagh	SH_28_718	No
Ballycannon (Meelick) WWTP	Clare	2	Ensure capacity of treatment plant is not exceeded	2010	LoughDerg	SH_25_3896	No
Clonlara WWTP	Clare	2	Ensure capacity of treatment plant is not exceeded	2010	LoughDerg	SH_25_3709	No
Mountshannon WWTP	Clare	2	Ensure capacity of treatment plant is not exceeded	2010	LoughDerg	SH_25_3904_1	No
Scarriff WWTP	Clare	3	Ensure capacity of treatment plant is not exceeded	2010	LoughDerg	SH_25_2142	No
Whitegate WWTP	Clare	2	Ensure capacity of treatment plant is not exceeded	2010	LoughDerg	SH_25_3904_1	No
Ballydesmond	Cork North	2	Ensure capacity of treatment plant is not exceeded	2010	Blackwater	SW_18_450	No
Bweeng	Cork North	2	Ensure capacity of treatment plant is not exceeded	2010	Blackwater	SW_18_1922	No
Clondulane	Cork North	2	Ensure capacity of treatment plant is not exceeded	2010	Blackwater	SW_18_2755	No
Dromahane WWTP	Cork North	2	Ensure capacity of treatment plant is not exceeded	2010	Blackwater	SW_18_2541	No
Kilbrin	Cork North	2	Ensure capacity of treatment plant is not exceeded	2010	Blackwater	SW_18_1933	No
Meelin	Cork North	2	Ensure capacity of treatment plant is not exceeded	2010	Blackwater	SW_18_553	No
Newmarket	Cork North	2	Ensure capacity of treatment plant is not exceeded	2010	Blackwater	SW_18_394	No
Churchtown WWTP	Cork North	2	Ensure capacity of treatment plant is not exceeded	2010	Blackwater/Awbeg	SW_18_2677	No

Table 6 - Plants required to ensure capacity of treatment plant is not exceeded

Point Source Discharge	County	Priority	Measure	LA Proposed Date for Completion	WMU	WB Code	Extended Deadline
Dromina	Cork North	3	Ensure capacity of treatment plant is not exceeded	2010	Deel/ShannonEstuary	SH_24_846	No
Rockchapel	Cork North	2	Ensure capacity of treatment plant is not exceeded	2010	Feale	SH_23_1828	No
Newtownshandrum	Cork North	3	Ensure capacity of treatment plant is not exceeded	2010	Maigue	SH_24_1044	No
Bandon WWTP	Cork South	3	Ensure capacity of treatment plant is not exceeded	2010	Bandon/Stick	SW_20_2230_2	No
Riverstick WWTP	Cork South	3	Ensure capacity of treatment plant is not exceeded	2010	Bandon/Stick	SW_20_1209	No
Carrignavar	Cork South	3	Ensure capacity of treatment plant is not exceeded	2010	Glashaboy	SW_19_1740	No
Ballygarvan	Cork South	3	Ensure capacity of treatment plant is not exceeded	2010	LowerLee/Owenboy	SW_19_1968	No
Blarney/Tower WWTP	Cork South	3	Ensure capacity of treatment plant is not exceeded	2010	LowerLee/Owenboy	SW_19_1827	No
Cloghroe WWTP	Cork South	3	Ensure capacity of treatment plant is not exceeded	2010	LowerLee/Owenboy	SW_19_841	No
Coachford WWTP	Cork South	2	Ensure capacity of treatment plant is not exceeded	2010	LowerLee/Owenboy	SW_19_1663	No
Whitechurch	Cork South	3	Ensure capacity of treatment plant is not exceeded	2010	LowerLee/Owenboy	SW_19_1520	No
Kilmurry	Cork South	3	Ensure capacity of treatment plant is not exceeded	2010	UpperLee	SW_19_1875	No
Macroom U.D.C. WWTP	Cork South	3	Ensure capacity of treatment plant is not exceeded	2010	UpperLee	SW_19_1710	No
Killeagh WWTP	Cork South	3	Ensure capacity of treatment plant is not exceeded	2010	Womanagh	SW_19_1798	No
Castletownbere Sewerage Scheme	Cork West	2	Ensure capacity of treatment plant is not exceeded	2010	BearaPenninsula	SW_180_0000	No
Kealkil Sewerage Scheme	Cork West	3	Ensure capacity of treatment plant is not exceeded	2010	InnerBantryBay	SW_21_8048	No

Table 6 - Plants required to ensure capacity of treatment plant is not exceeded

Point Source Discharge	County	Priority	Measure	LA Proposed Date for Completion	WMU	WB Code	Extended Deadline
Drimoleague	Cork West	3	Ensure capacity of treatment plant is not exceeded	2010	SkibbereenClonakilty	SW_20_876	No
Glenties WWTP	Donegal	2	Ensure capacity of treatment plant is not exceeded	2010	Owenea	NW_38_1168	No
Balgriffin	Dublin City	3	Ensure capacity of treatment plant is not exceeded	2010	SantryMayneSluice	EA_09_1428	No
Athenry WWTP	Galway County	3	Ensure capacity of treatment plant is not exceeded	2010	Clarinbridge	WE_29_310	No
Moycullen WWTP	Galway County	2	Ensure capacity of treatment plant is not exceeded	2010	Corrib	WE_30_2290	No
Gort WWTP	Galway County	2	Ensure capacity of treatment plant is not exceeded	2010	Kinvara	WE_29_2	No
Moylough	Galway County	2	Ensure capacity of treatment plant is not exceeded	2010	Suck	SH_26_2889	No
Listowel WWTP	Kerry	2	Ensure capacity of treatment plant is not exceeded	2010	Feale	SH_23_2941	No
Killorglin WWTP	Kerry	2	Ensure capacity of treatment plant is not exceeded	2010	Laune	SW_230_0200	No
Nurney WWTP	Kildare	3	Ensure capacity of treatment plant is not exceeded	2010	BarrowMain	SE_14_842	No
Kildare Town WWTP	Kildare	2	Ensure capacity of treatment plant is not exceeded	2010	BarrowMain	SE_14_842	No
Allenwood WWTP	Kildare	2	Ensure capacity of treatment plant is not exceeded	2010	Figile	SE_14_999	No
Robertstown WWTP	Kildare	2	Ensure capacity of treatment plant is not exceeded	2010	Figile	SE_14_999	No
Gowran Sewerage Scheme WWTP	Kilkenny	3	Ensure capacity of treatment plant is not exceeded	2010	BarrowMain	SE_14_1879	No
Clogh-Moneenroe Sewerage Scheme WWTP	Kilkenny	2	Ensure capacity of treatment plant is not exceeded	2010	DInin	SE_15_109	No
Callan Sewerage Scheme WWTP	Kilkenny	2	Ensure capacity of treatment plant is not exceeded	2010	Kings	SE_15_1819	No

Table 6 - Plants required to ensure capacity of treatment plant is not exceeded

Point Source Discharge	County	Priority	Measure	LA Proposed Date for Completion	WMU	WB Code	Extended Deadline
Ballyraggett Sewerage Scheme WWTP	Kilkenny	2	Ensure capacity of treatment plant is not exceeded	2010	NoreMain	SE_15_1994_2	No
Bennettsbridge Sewerage Scheme WWTP	Kilkenny	2	Ensure capacity of treatment plant is not exceeded	2010	NoreMain	SE_15_1994_5	No
Errill	Laois	2	Ensure capacity of treatment plant is not exceeded	2010	Erkina	SE_15_1425	No
Castletown WWTP	Laois	2	Ensure capacity of treatment plant is not exceeded	2010	NoreUpper	SE_15_1836	No
Stradbally, Laois	Laois	2	Ensure capacity of treatment plant is not exceeded	2010	Stradbally	SE_14_575	No
Dromahair WWTP	Leitrim	2	Ensure capacity of treatment plant is not exceeded	2010	Garravogue	WE_35_3842	No
Manorhamilton WWTP	Leitrim	3	Ensure capacity of treatment plant is not exceeded	2010	Garravogue	WE_35_2798	No
Leitrim Village WWTP	Leitrim	3	Ensure capacity of treatment plant is not exceeded	2010	UpperShannon	SH_26_3490	No
Athea	Limerick County	2	Ensure capacity of treatment plant is not exceeded	2010	Feale	SH_23_2514	No
Drumlish WWTP	Longford	3	Ensure capacity of treatment plant is not exceeded	2010	Camlin/Rinn	SH_26_1145	No
Keenagh WWTP	Longford	2	Ensure capacity of treatment plant is not exceeded	2010	Camlin/Rinn	SH_26_2726	No
Longford WWTP	Longford	2	Ensure capacity of treatment plant is not exceeded	2010	Camlin/Rinn	SH_26_3927_2	No
Edgeworthstown WWTP	Longford	3	Ensure capacity of treatment plant is not exceeded	2010	Inny	SH_26_3870	No
Carlingford WWTP	Louth	2	Ensure capacity of treatment plant is not exceeded	2010	Carlingford	NB_030_0000	No
Mallaranny WWTP	Mayo	2	Ensure capacity of treatment plant is not exceeded	2010	ClewBay	WE_32_2891	No
Westport	Mayo	2	Ensure capacity of treatment plant is not exceeded	2010	ClewBay	WE_350_0100	No

Table 6 - Plants required to ensure capacity of treatment plant is not exceeded

Point Source Discharge	County	Priority	Measure	LA Proposed Date for Completion	WMU	WB Code	Extended Deadline
Ballycastle WWTP	Mayo	3	Ensure capacity of treatment plant is not exceeded	2010	Conn	WE_33_2091	No
Kilmaine WWTP	Mayo	2	Ensure capacity of treatment plant is not exceeded	2010	Corrib	WE_30_1231	No
Claremorris WWTP	Mayo	2	Ensure capacity of treatment plant is not exceeded	2010	Mask	WE_30_3370_2	No
Kilkelly WWTP	Mayo	2	Ensure capacity of treatment plant is not exceeded	2010	Moy	WE_34_2180	No
Kildalkey	Meath	2	Ensure capacity of treatment plant is not exceeded	2010	Athboy	EA_07_971	No
Carlanstown WWTP	Meath	3	Ensure capacity of treatment plant is not exceeded	2010	BlackwaterNorth	EA_07_940	No
Kells WWTP	Meath	2	Ensure capacity of treatment plant is not exceeded	2010	BlackwaterNorth	EA_07_1536_2	No
Ballivor WWTP	Meath	3	Ensure capacity of treatment plant is not exceeded	2010	BoyneLower	EA_07_340	No
Navan WWTP	Meath	2	Ensure capacity of treatment plant is not exceeded	2010	BoyneLower	EA_07_1894_3	No
Slane WWTP	Meath	2	Ensure capacity of treatment plant is not exceeded	2010	BoyneLower	EA_07_1894_3	No
Trim WWTP	Meath	2	Ensure capacity of treatment plant is not exceeded	2010	BoyneLower	EA_07_1894_2	No
Drumconrath WWTP	Meath	3	Ensure capacity of treatment plant is not exceeded	2010	Dee	NB_06_195	No
Kilmainhamwood	Meath	3	Ensure capacity of treatment plant is not exceeded	2010	Dee	NB_06_610	No
Nobber	Meath	3	Ensure capacity of treatment plant is not exceeded	2010	Dee	NB_06_50	No
Stamullen WWTP	Meath	3	Ensure capacity of treatment plant is not exceeded	2010	Delvin	EA_08_138	No
Kentstown	Meath	3	Ensure capacity of treatment plant is not exceeded	2010	Nanny	EA_08_298	No

Table 6 - Plants required to ensure capacity of treatment plant is not exceeded

Point Source Discharge	County	Priority	Measure	LA Proposed Date for Completion	WMU	WB Code	Extended Deadline
Kilcloon (Kilclone)	Meath	3	Ensure capacity of treatment plant is not exceeded	2010	Ryewater	EA_09_1060	No
Ballinode WWTP	Monaghan	3	Ensure capacity of treatment plant is not exceeded	2010	Blackwater	XB_03_8	No
Emyvale WWTP	Monaghan	3	Ensure capacity of treatment plant is not exceeded	2010	Blackwater	XB_03_6	No
Newbliss WWTP	Monaghan	3	Ensure capacity of treatment plant is not exceeded	2010	ErneEast	NW_36_1288	No
Inniskeen WWTP	Monaghan	3	Ensure capacity of treatment plant is not exceeded	2010	Fane	XB_06_8	No
Rathcabin	North Tipp	3	Ensure capacity of treatment plant is not exceeded	2010	Brosna	SH_25_2092	No
Ballina, North Tipp	North Tipp	3	Ensure capacity of treatment plant is not exceeded	2010	LoughDerg	SH_25_3904_1	No
Dromineer	North Tipp	2	Ensure capacity of treatment plant is not exceeded	2010	LoughDerg	SH_25_3904_1	No
Newtown	North Tipp	3	Ensure capacity of treatment plant is not exceeded	2010	LoughDerg	SH_25_2785	No
Portroe	North Tipp	3	Ensure capacity of treatment plant is not exceeded	2010	LoughDerg	SH_25_2530	No
Newport, North Tipp	North Tipp	3	Ensure capacity of treatment plant is not exceeded	2010	Mulkear	SH_25_320	No
Rear Cross	North Tipp	2	Ensure capacity of treatment plant is not exceeded	2010	Mulkear	SH_25_1924	No
Nenagh WWTP	North Tipp	2	Ensure capacity of treatment plant is not exceeded	2010	Nenagh	SH_25_335	No
Holycross WWTP	North Tipp	2	Ensure capacity of treatment plant is not exceeded	2010	SuirUpper	SE_16_3993	No
Cloghan WWTP	Offaly	3	Ensure capacity of treatment plant is not exceeded	2010	Brosna	SH_25_3014	No
Geashill WWTP	Offaly	3	Ensure capacity of treatment plant is not exceeded	2010	Brosna	SH_25_542	No

Table 6 - Plants required to ensure capacity of treatment plant is not exceeded

Point Source Discharge	County	Priority	Measure	LA Proposed Date for Completion	WMU	WB Code	Extended Deadline
Shinrone WWTP	Offaly	3	Ensure capacity of treatment plant is not exceeded	2010	Brosna	SH_25_877	No
Ballaghaderreen WWTP	Roscommon	3	Ensure capacity of treatment plant is not exceeded	2010	UpperShannon	SH_26_1122_1	No
Ballymote WWTP	Sligo	3	Ensure capacity of treatment plant is not exceeded	2010	Ballysadare	WE_35_938	No
Easkey WWTP	Sligo	2	Ensure capacity of treatment plant is not exceeded	2010	Ballysadare	WE_35_1416	No
Riverstown WWTP	Sligo	2	Ensure capacity of treatment plant is not exceeded	2010	Ballysadare	WE_35_4019	No
Ardfinnan WWTP	South Tipp	2	Ensure capacity of treatment plant is not exceeded	2010	SuirMain	SE_16_4181_3	No
Cahir WWTP	South Tipp	2	Ensure capacity of treatment plant is not exceeded	2010	SuirMain	SE_16_4181_3	No
Golden WWTP	South Tipp	2	Ensure capacity of treatment plant is not exceeded	2010	SuirMain	SE_16_4181_2	No
Lismore WWTP	Waterford County	2	Ensure capacity of treatment plant is not exceeded	2010	Blackwater	SW_18_2755	No
Piltown	Waterford County	2	Ensure capacity of treatment plant is not exceeded	2010	BlackwaterEstuary	SW_020_0100	No
Tooraneena WWTP	Waterford County	3	Ensure capacity of treatment plant is not exceeded	2010	BlackwaterEstuary	SW_18_2514	No
Clonea Power WWTP	Waterford County	2	Ensure capacity of treatment plant is not exceeded	2010	ClodiaghWD	SE_16_3698	No
Ballinroad WWTP	Waterford County	2	Ensure capacity of treatment plant is not exceeded	2010	ColliganMahon	SE_140_0100	No
Passage East WWTP	Waterford County	2	Ensure capacity of treatment plant is not exceeded	2010	ColliganMahon	SE_100_0100	No
Checkpoint WWTP	Waterford County	2	Ensure capacity of treatment plant is not exceeded	2010	SuirEstuary	SE_100_0100	No
Ballymore	Westmeath	3	Ensure capacity of treatment plant is not exceeded	2010	Inny	SH_26_3719	No

Table 6 - Plants required to ensure capacity of treatment plant is not exceeded

Point Source Discharge	County	Priority	Measure	LA Proposed Date for Completion	WMU	WB Code	Extended Deadline
Ballynacarrigy WWTP	Westmeath	3	Ensure capacity of treatment plant is not exceeded	2010	Inny	SH_26_2531	No
Multyfarnham WWTP	Westmeath	3	Ensure capacity of treatment plant is not exceeded	2010	Inny	SH_26_3006	No
Adamstown	Wexford	3	Ensure capacity of treatment plant is not exceeded	2010	BallyteigueBannow	SE_13_285	No
Carrick-on-Bannow	Wexford	3	Ensure capacity of treatment plant is not exceeded	2010	BallyteigueBannow	SE_13_662	No
Clonroche	Wexford	2	Ensure capacity of treatment plant is not exceeded	2010	BoroUrrin	SE_12_2601	No
Ballycanew	Wexford	3	Ensure capacity of treatment plant is not exceeded	2010	Owenavorrhagh	SE_11_251	No
Ballygarrett	Wexford	3	Ensure capacity of treatment plant is not exceeded	2010	Owenavorrhagh	SE_11_490	No
Kilinerin	Wexford	3	Ensure capacity of treatment plant is not exceeded	2010	Owenavorrhagh	SE_11_519	No
Ballaghkeen - Hse Est	Wexford	3	Ensure capacity of treatment plant is not exceeded	2010	SlaneyEstuary	SE_12_851	No
Tagoat	Wexford	3	Ensure capacity of treatment plant is not exceeded	2010	SlaneyEstuary	SE_12_440	No
Enniscorthy WWTP	Wexford	2	Ensure capacity of treatment plant is not exceeded	2010	SlaneyLower	SE_040_0300	No
Enniscorthy WWTP	Wexford	2	Ensure capacity of treatment plant is not exceeded	2010	SlaneyLower	SE_040_0300	No
Carnew, Wicklow	Wicklow	3	Ensure capacity of treatment plant is not exceeded	2010	Derry	SE_12_757	No
Tinahely WWTP	Wicklow	2	Ensure capacity of treatment plant is not exceeded	2010	Derry	SE_12_1442	No
Blessington WWTP	Wicklow	2	Ensure capacity of treatment plant is not exceeded	2010	Liffey	EA_09_1870_1	No
Greystones WWTP	Wicklow	2	Ensure capacity of treatment plant is not exceeded	2010	Newcastle	EA_100_0000	No

Table 6 - Plants required to ensure capacity of treatment plant is not exceeded

Point Source Discharge	County	Priority	Measure	LA Proposed Date for Completion	WMU	WB Code	Extended Deadline
Glenealy WWTP	Wicklow	3	Ensure capacity of treatment plant is not exceeded	2010	Rathnew	EA_10_588	No
Ashford WWTP	Wicklow	2	Ensure capacity of treatment plant is not exceeded	2010	Vartry	EA_10_1601	No

Table 4 - Plants requiring the Implementation of an Appropriate Performance Management System

Point Source Discharge	County	Priority	Measure	LA Proposed Date for Completion	WMU	WB Code	Extended Deadline
Patrickswell WWTP	Limerick County	1	Implement an appropriate performance management system	2012	Maugue	SH_24_1704	No
Cappamore	Limerick County	1	Implement an appropriate performance management system	2012	Mulkear	SH_25_486	No
Doon	Limerick County	1	Implement an appropriate performance management system	2012	Mulkear	SH_25_2001	No
Ardee WWTP	Louth	1	Implement an appropriate performance management system	2012	Dee	NB_06_1099	No
Clogherhead WWTP	Louth	1	Implement an appropriate performance management system	2012	Dee	NB_025_0000	No
Dunleer WWTP	Louth	1	Implement an appropriate performance management system	2012	Dee	NB_06_549	No
Dundalk WWTP	Louth	1	Implement an appropriate performance management system	2012	Fane	NB_040_0200	No
Louth Village WWTP	Louth	1	Implement an appropriate performance management system	2012	Fane	NB_06_229	No
Castlebellingham WWTP	Louth	1	Implement an appropriate performance management system	2012	Glyde	NB_06_1097	No
Louisburgh WWTP	Mayo	1	Implement an appropriate performance management system	2012	ClewBay	WE_32_3759	No
Mallaranny WWTP	Mayo	1	Implement an appropriate performance management system	2012	ClewBay	WE_32_2891	No
Westport	Mayo	1	Implement an appropriate performance management system	2012	ClewBay	WE_350_0100	No